

UNI-PACK POWER PACK



DESIGNED & BUILT
BRITAIN

100% TESTED



CODING & INFORMATION

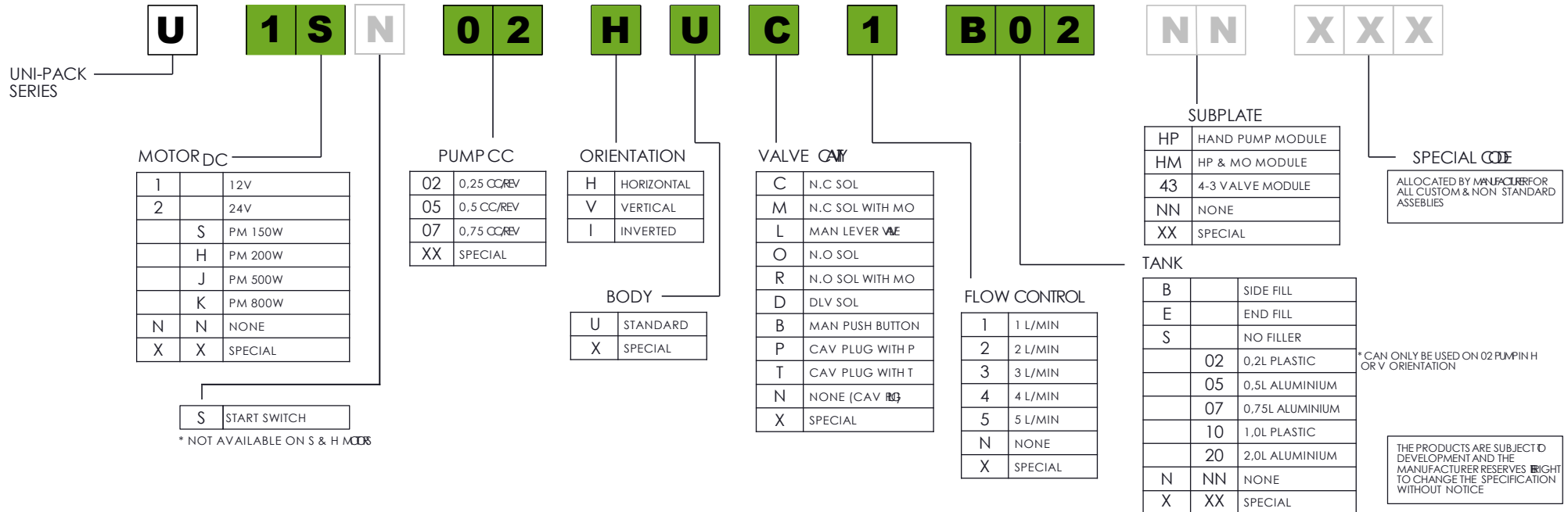
HYDRAULIC FLUID (RECOMMENDED)
MINERAL HYDRAULIC OIL (HM OR HV)
FOR NORMAL AMBIENT TEMP RANGE (0°C - 40°C)
ISO VG22 TO ISO VG 46

WORKING TEMP AMBIENT -20°C - +40°C

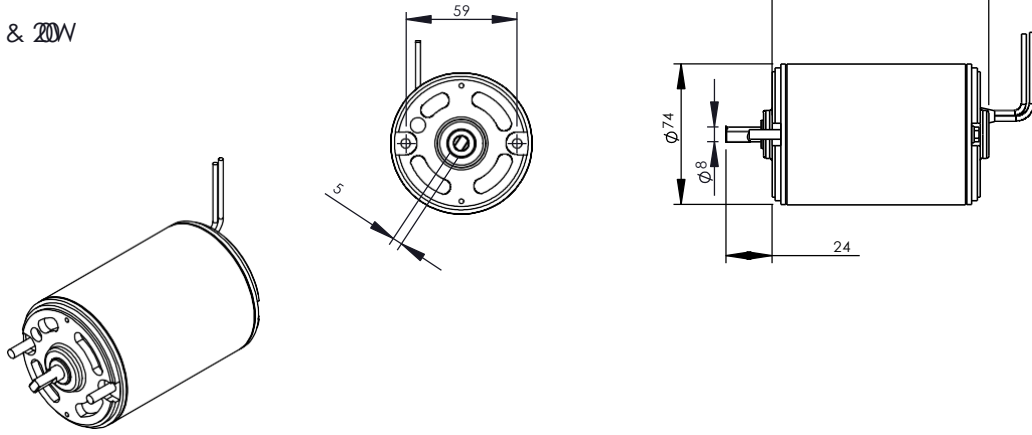
WEIGHT
TYPICAL ASSEMBLY (MOTOR DEPENDANT) 4,3KG
EACH ADDITIONAL 0.5LITRE TANK CAPACITY

MAXIMUM SYSTEM PRESSURE
PUMP DEPENDANT 200BAR

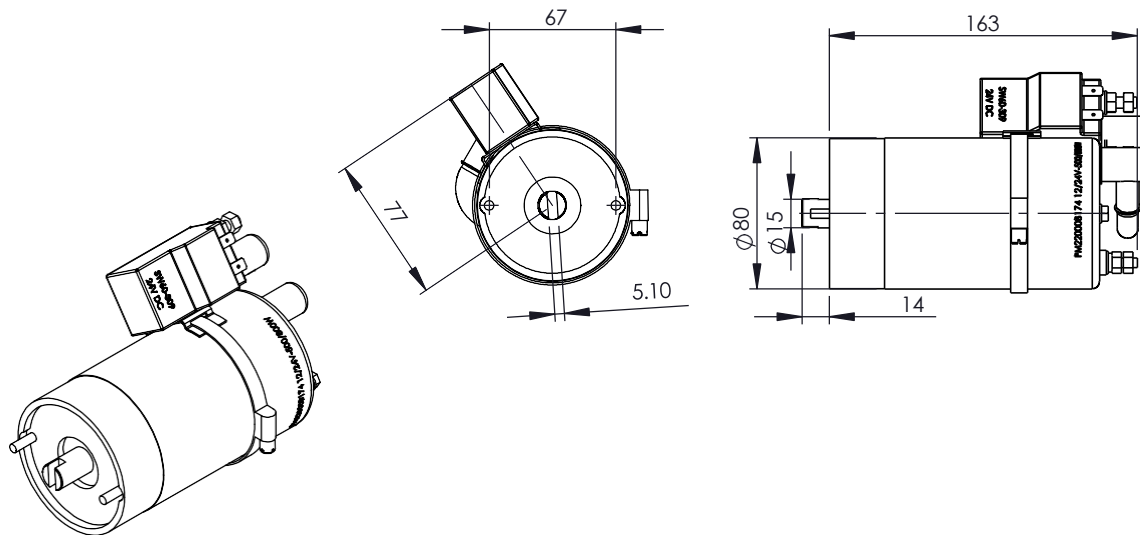
ISSUE 01 080817



3" 150 & 200W



3" 500 & 800W



DC MOTOR KITS

SERIES KEY:



01 MOTOR ONLY
05 MOTOR & STARTER

3" 150 & 200W

MOTOR VOLTAGE	POWER W	MAX RPM	TYPE (DIA)	KIT CODE	SERIES	CODE
12VDC	150	3000	3"	U1S	01	1S
12VDC	200	4000	3"	U1H	01	1H
24VDC	150	3000	3"	U2S	01	2S
24VDC	200	4000	3"	U2H	01	2H

3" 500 & 800W

MOTOR VOLTAGE	POWER W	MAX RPM	TYPE (DIA)	KIT CODE	SERIES	CODE
12VDC	500	3000	3"	IRJ	01	1J
					05	1JS
12VDC	800	4000	3"	IRK	01	1K
					05	1KS
24VDC	500	3000	3"	2RJ	01	2J
					05	2JS
24VDC	800	4000	3"	2RK	01	2K
					05	2KS

SERIES (U)

MOTOR (1S)

PUMP (02)

BODY (H)

VALVE (C)

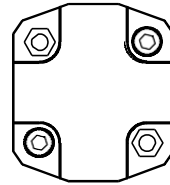
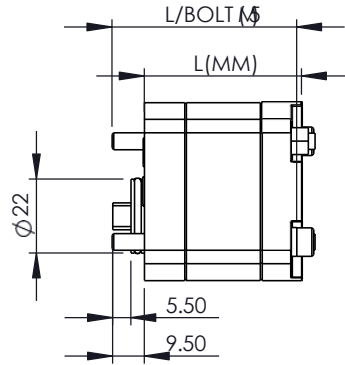
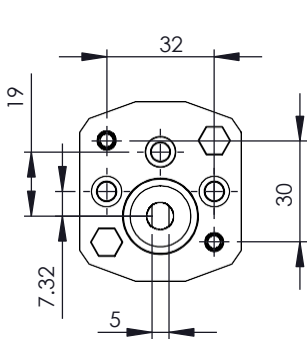
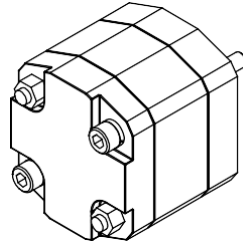
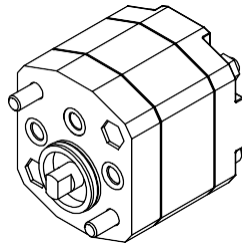
FC (1)

TANK (B02)

SUBPLATE (NN)

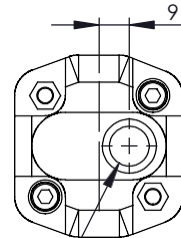
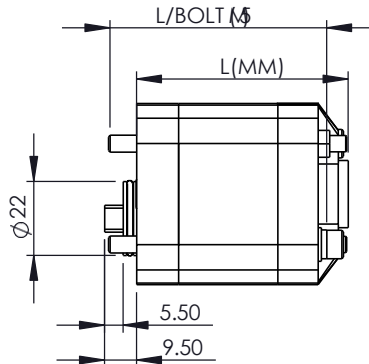
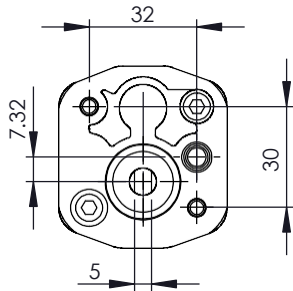
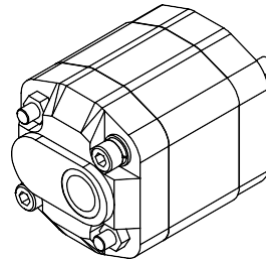
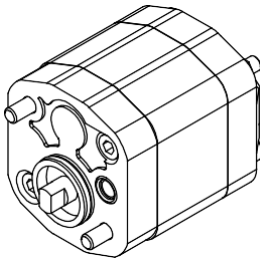
KPR

REVERSIBLE
PUMP USED IN
ANTICLOCKWISE
ROTATION



KPU

ANTICLOCKWISE
ROTATION



1/4" BSP
SUCTION PORT

GP05 PUMP KITS

KPR ** 0 2B

*FOR "H" & "V" MOTORS

PUMP CC/REV	Pn (BAR)	Pmax (BAR)	L(MM)	L/BOLT	SPACER	CODE
0.25	180	200	47	55	NO	02
0.5			55	60		05
0.75			57	65		07

Pn = NOMINAL WORKING PRESSURE

Pmax = MAX PRESSURE

KPU ** 0 1A

*FOR "I" MOTORS

PUMP CC/REV	Pn (BAR)	Pmax (BAR)	L(MM)	L/BOLT	SPACER	CODE
0.25	180	200	61.2	60	NO	02
0.5			63	65		05
0.75			65.2	65		07

Pn = NOMINAL WORKING PRESSURE

Pmax = MAX PRESSURE

DRIVE DOGS:

99725-F12 - FOR USE WITH 3" DC MOTORS 150 & 200W
99725-F50 - FOR USE WITH 3" DC MOTORS 500 & 800W

SERIE
(U)

MOTO
(1S)

PUM
(02)

BOD
(H)

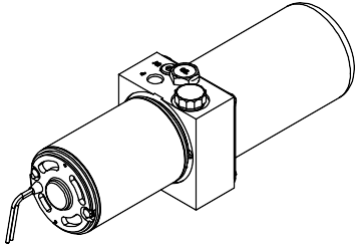
VALV
(C)

FC
(1)

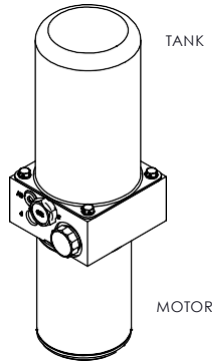
TAN
(B02)

SUBPLAT
(NN)

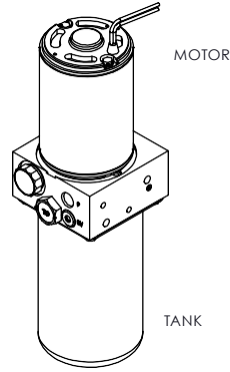
H *ORIENTATION FOR KPR TYPE PUMPS ONLY



V *ORIENTATION FOR KPR TYPE PUMPS ONLY



I *ORIENTATION FOR KPU TYPE PUMPS ONLY



POWER PACK ORIENTATION

ORIENTATION

TYPE	ORIENTATION	DESCRIPTION	PREFIX
H	HORIZONTAL	HORIZONTAL MOUNT	H
V	VERTICAL	VERTICAL TANK ⬆	V
I	INVERTED	VERTICAL MOTOR ⬆	I

UNI-PACK SERIES CENTRE PLATE KIT

KC U DU 10 1A

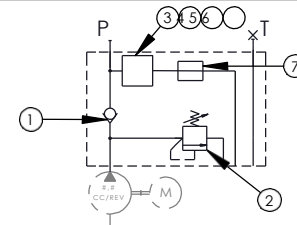
CENTRE PLATE INTERNAL VALVE KITS

ITEM NO.	KIT ID	DESCRIPTION	MAX PRESSURE
1	IKCV02A	CHECK VALVE	200 BAR
2	IKRV02A	RELIEF VALVE KIT	

OTHER

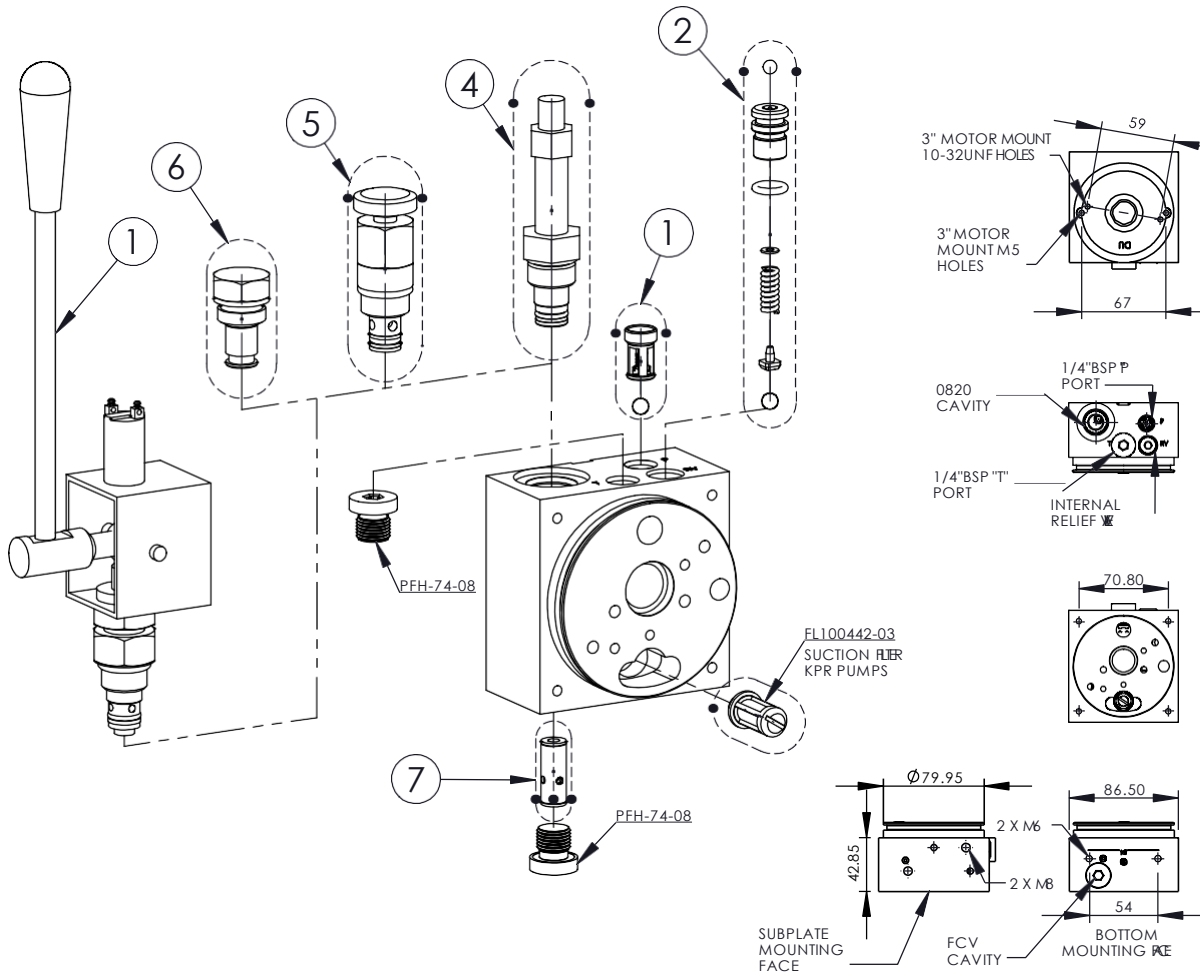
ITEM NO	DESCRIPTION	
3	LEVER	SEE VALVE
4	SOLENOID VALVE	
5	MANUAL VALVE	
6	CAVITY PLUG	
7	FLOW CONTROL	SEE FCV

CIRCUIT DIAGRAM



CENTRE PLATE KIT INCLUDES:

- IKCV02A - CHECK VALVE KIT
- IKRV02A - RELIEF VALVE KIT
- 105220-DU - UNI-PACK CENTRE PLATE (REFERENCE ONLY)



SERIE S (U)

MOTO R (1S)

PUM P (02)

BODY (H)

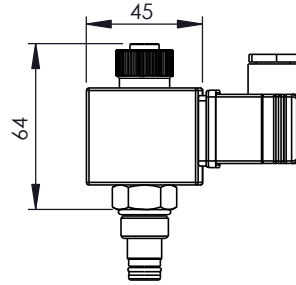
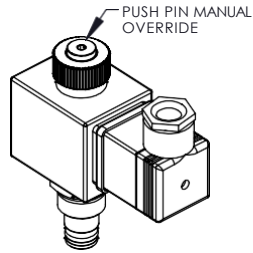
VALVE (C)

FCV (1)

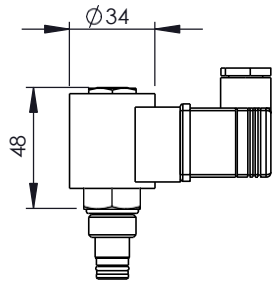
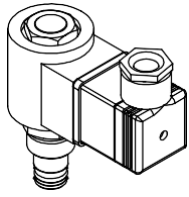
TANK (B02)

SUBPLATE (NN)

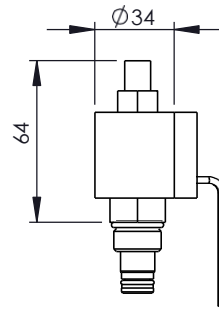
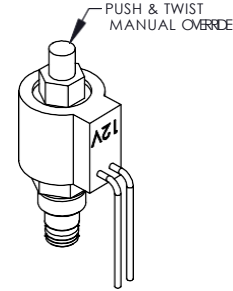
KDLV2-8-**H
TYPE H COIL SHOWN



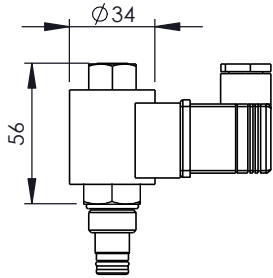
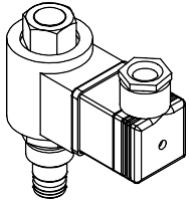
KSLV2-8-**H
TYPE H COIL SHOWN



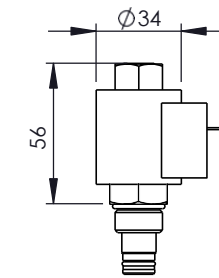
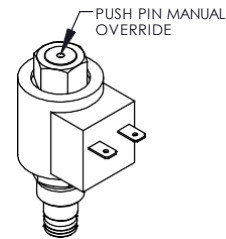
KSLV2-8-M-**F
TYPE F COIL SHOWN



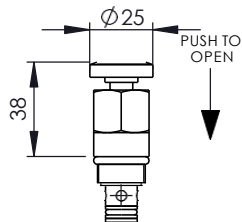
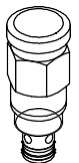
KOLV2-8-**H
TYPE H COIL SHOWN



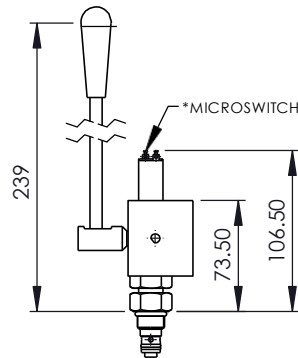
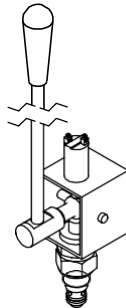
KOLV2-8-M-**L
TYPE L COIL SHOWN



ET-CPE04P0000



K-LMER-08



SOLENOID CARTRIDGE

K*LV2-8*-***

SOLENOID VALVES

VALVE FUNCTION	PREFIX (KIT CODING)	OVERRIDE OPTION (KIT CODING)	VOLTAGE (KIT CODING)	COIL TYPE (KIT CODING)	CODE
	S	-	NN -NONE		C
	S	M	12 -12VDC	F -FLY LEAD	M
	O	-	24 -24VDC	H -DIN43650	O
	O	M	110 -110VAC	L -LGR	R
	D	-	220 -220VAC		D

OTHER

VALVE FUNCTION	PART ID	CODE
	ET-CPE04P0000	B
	K-LMER-08 *MICROSWITCH TO BE USED WITH START SWITCH OR START RELAY	L
	KCPG04A	P
	KCPG03A	T
	KCPG02A	N
SPECIAL - DESIGNATED BY MANUFACTURER ONLY		X

SERIES (u)

MOTOR (1S)

PUMP (02)

BODY (H)

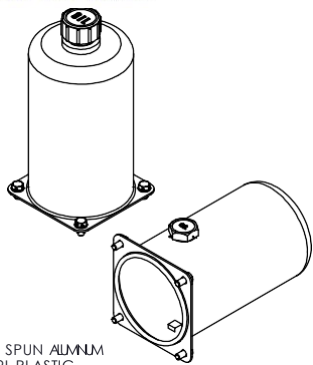
VALVE (C)

FUNCTION (1)

TANK (B02)

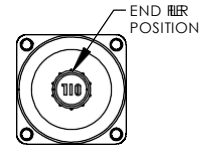
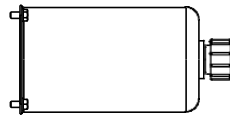
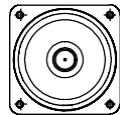
SUBPLATE (NN)

TYPE1

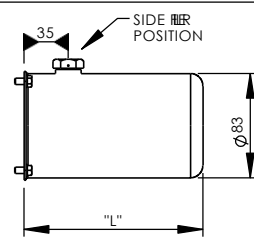
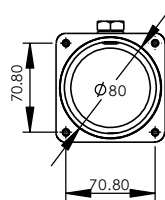


MATERIAL: SPUN ALUMINUM EXCEPT 0.2L PLASTIC

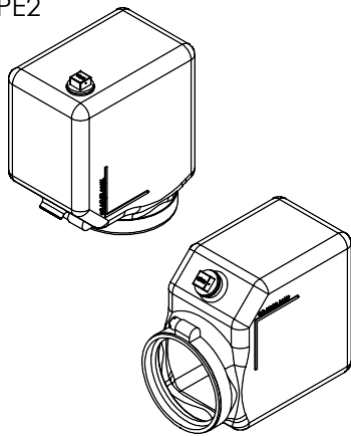
END FILL



SIDE FILL

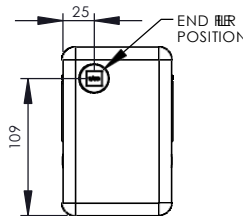
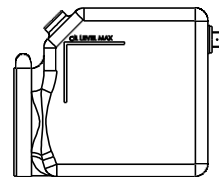


TYPE2

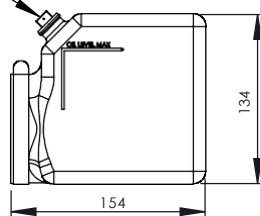
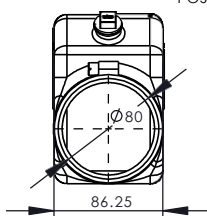


MATERIAL: PAC

END FILL

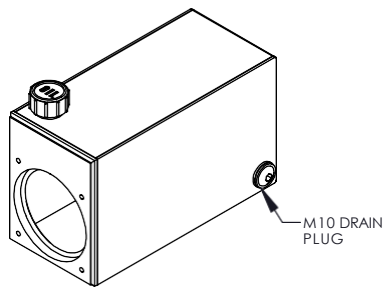


SIDE FILL

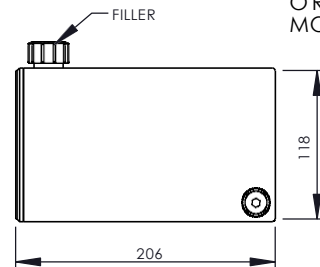
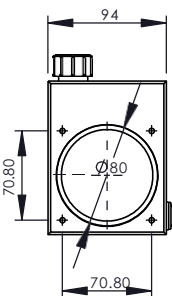


TYPE3

* THROUGH HOLE CENTRE REQUIRED FOR THIS TANK NOT AVAILABLE AS STANDARD



MATERIAL: ALUMINUM



ALL TANK KITS INCLUDE FILLER BREATHER CLAMP BAND O'RING MOUNTING BOLTS

UNI-PACK SERIES

KTA ** * 01A

SIDE FILL

TANK VOLUME L	TYPE	L(MM)	BOLT	SUFFIX (KIT CODING)	PREFIX (POWER PACK CODING)	CODE
0.2L	1	80	M5	B	B	02
0.5L		140	M5			05
0.75L		240	M5			07
1.0L	2	154	CB	B	B	10
2.0L	3	206	M5	B	B	20

END FILL

TANK VOLUME L	TYPE	L(MM)	BOLT	SUFFIX (KIT CODING)	PREFIX (POWER PACK CODING)	CODE
0.2L	1	80	M5	E	E	02
0.5L		140	M5			05
0.75L		240	M5			07
1.0L	2	154	CB	E	E	10

NO FILL BLANKED (S) FILL THROUGH

TANK VOLUME L	TYPE	L(MM)	BOLT	SUFFIX (KIT CODING)	PREFIX (POWER PACK CODING)	CODE
0.2L	1	80	M5	S	S	02
0.5L		140	M5			05
0.75L		240	M5			07
1.0L	2	154	CB	S	S	10
2.0L	3	206	M5	S	S	20

OTHER

NO TANK	N	NN
SPECIAL - DESIGNATED BY MANUFACTURER ONLY	X	XX

*CB = CLAMP BAND

SERIE S (U)

MOTO R (IS)

PUM P (OZ)

BOD Y (H U)

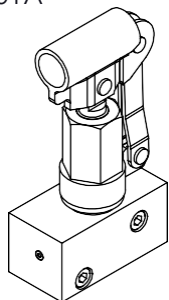
VALV E (C)

FC V (1)

TAN K (B02)

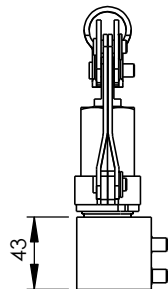
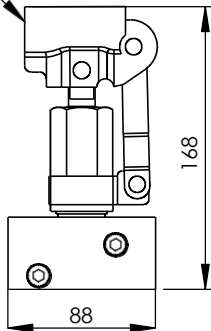
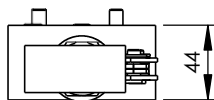
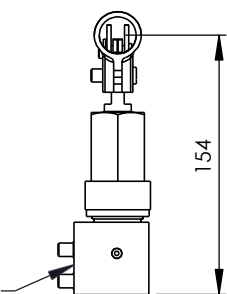
SUBPLAT E (NN)

KBAH01A



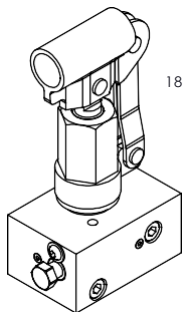
180° ORIENTATION

CONNECTING FACE TO CENTRE PLATE



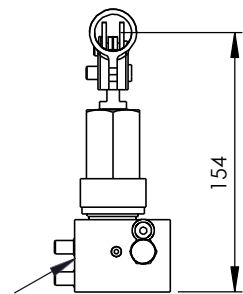
FOR USE WITH HANDLE
FL8154-2-ASSY

KBAHP02A



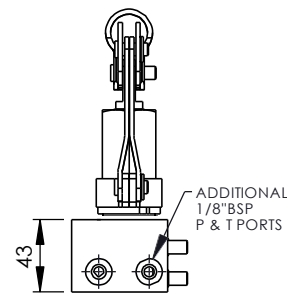
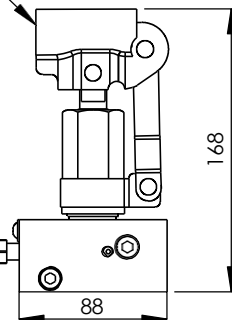
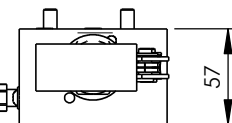
180° ORIENTATION

CONNECTING FACE TO CENTRE PLATE



MANUAL
OVERRIDE
DART

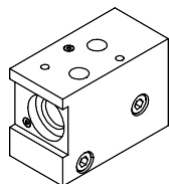
4CC
HAND PUMP



FOR USE WITH HANDLE
FL8154-ASSY

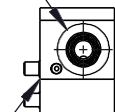
KBA4301A

*FOR USE WITH 4-3
SOLENOID CARTRIDGE VALVE

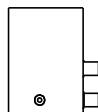
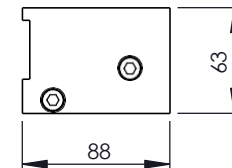
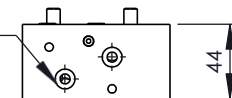


CONNECTING FACE TO CENTRE PLATE

0840 CAVITY
4-3 CARTRIDGE
VALVE

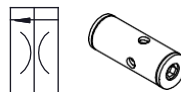


1/4" BSP
OUTLET PORTS



FLOW CONTROL

PRESSURE COMPENSATED FLOW CONTROL



CONTROLLED FLOW	PART ID	MAX PRESSURE	CODE
1 L/MIN	100483-2-009	210 BAR	1
2 L/MIN	100483-2-020		2
3 L/MIN	100483-2-030		3
4 L/MIN	100483-2-040		4
5 L/MIN	100483-2-050		5

OTHER FLOWS AVAILABLE ON REQUEST

OTHER

NO VALVE	N
SPECIAL - DESIGNATED BY MANUFACTURER ONLY	X

SUBPLATES KITS

SUBPLATE FUNCTION	KIT ID	CODE
HAND PUMP MODULE	KBAHP01A	HP
HP MODULE WITH MO	KBAHP02A	HM
4/3 CAVITY MODULE	KBA4301A	43

OTHER

NO SUBPLATE	NN
SPECIAL - DESIGNATED BY MANUFACTURER ONLY	XX

ALL SUBPLATE KITS INCLUDE
BLANKING PLUGS
O-RINGS
MOUNTING BOLTS

SERIE (U)
MOTO (1S)
PUM (02)
BOD Y (H)
VALV (C)
FC V (1)
TAN K (B02)
SUBPLAT (E (NN))