



ATLANTIC
Fluid Tech

SECTION 18

Modular
Valves for
Cetop

SECTION 18

MODULAR VALVES FOR CETOP

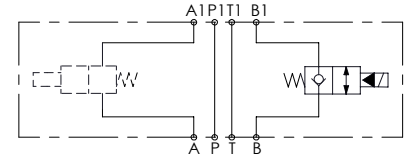
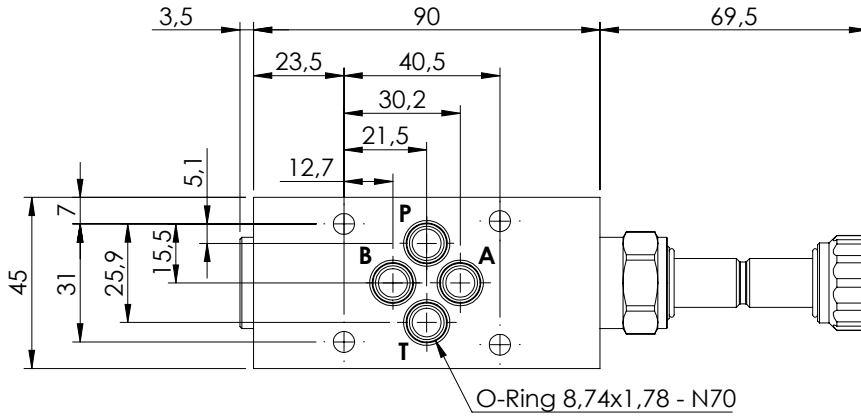
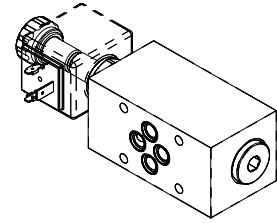


| Hydraulic scheme | Valve description | Valve type | Rated flow (l/min) | Max. pressure (bar) | Installation | Main port size or cavity type | Page |
|------------------|-------------------|--|--------------------|---------------------|--------------|-------------------------------|-----------|
| | BNND-040-LE | Left version | 40 | 210 | Flanged | Cetop 3 | 18.01.010 |
| | BNND-040-LE | Right version | 40 | 210 | Flanged | Cetop 3 | 18.01.010 |
| | BNFN-040-NT | Pilot operated, cetop 3 | 40 | 210 | Flanged | Cetop 3 | 18.02.020 |
| | KPLN-030-DPNA | Direct acting, cetop 3 | 30 | 210 | Flanged | Cetop 3 | 18.03.030 |
| | KPLN-030-DPNA | Direct acting, poppet type, subplate cetop 3 | 30 | 350 | Flanged | Cetop 3 | 18.04.040 |
| | KPLN-080-DPNA | Direct acting, poppet type, subplate cetop 5 | 80 | 350 | Flanged | Cetop 5 | 18.04.050 |
| | KPLT-030-DPNA | Direct acting, compensated | 30 | 210 | Flanged | Cetop 3 | 18.05.060 |
| | MBSN-060-ZTNR | Single acting, cetop 3 | 60 | 250 | Flanged | Cetop 3 | 18.06.070 |
| | MBSN-060-ATNR | Single acting, cetop 3 | 60 | 350 | Flanged | Cetop 3 | 18.06.080 |
| | MBST-100-ZTNP | Single acting, cetop 5 | 100 | 250 | Flanged | Cetop 5 | 18.07.090 |
| | MBDN-030-LTNR | Double acting, cetop 3 | 30 | 210 | Flanged | Cetop 3 | 18.08.100 |
| | MBDN-060-ZTNR | Double acting, cetop 3 | 60 | 210 | Flanged | Cetop 3 | 18.08.110 |
| | MBDN-060-ATNR | Double acting, cetop 3 | 60 | 350 | Flanged | Cetop 3 | 18.08.120 |
| | MBDN-100-ZTNR | Double acting, cetop 5 | 100 | 350 | Flanged | Cetop 5 | 18.08.130 |
| | MBDP-060-ZTNR | Double acting, cetop 3 | 60 | 210 | Flanged | Cetop 3 | 18.10.140 |
| | MBDT-100-ATNR | Double acting, cetop 5 | 100 | 350 | Flanged | Cetop 5 | 18.09.150 |

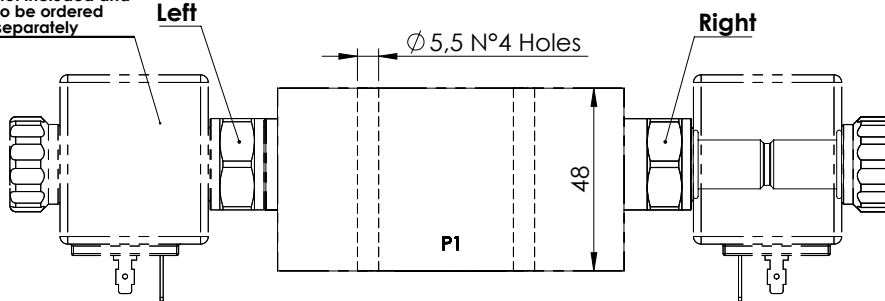
MODULAR VALVE FOR CETOP

BNND-040-LE

CETOP 3

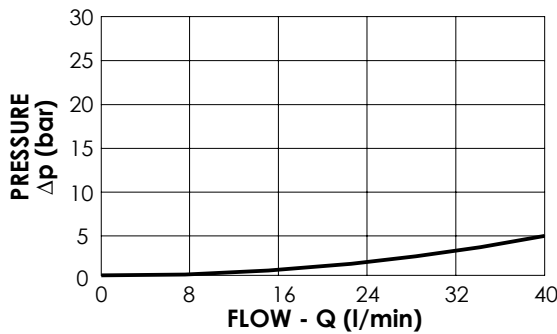


Coil type M7 not included and to be ordered separately



SPECIFICATIONS

| | |
|--------------------------|-----------|
| Max. operating pressure: | 210 bar |
| Rated flow: | 40 l/min |
| Cavity: | Aluminium |
| Weight: | 0,61 kg |
| Coil type: | M7 |



NOTES

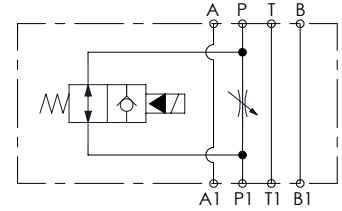
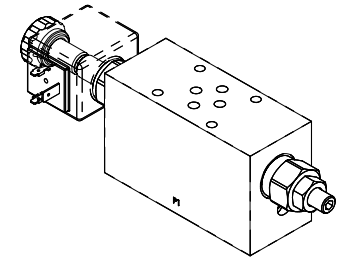
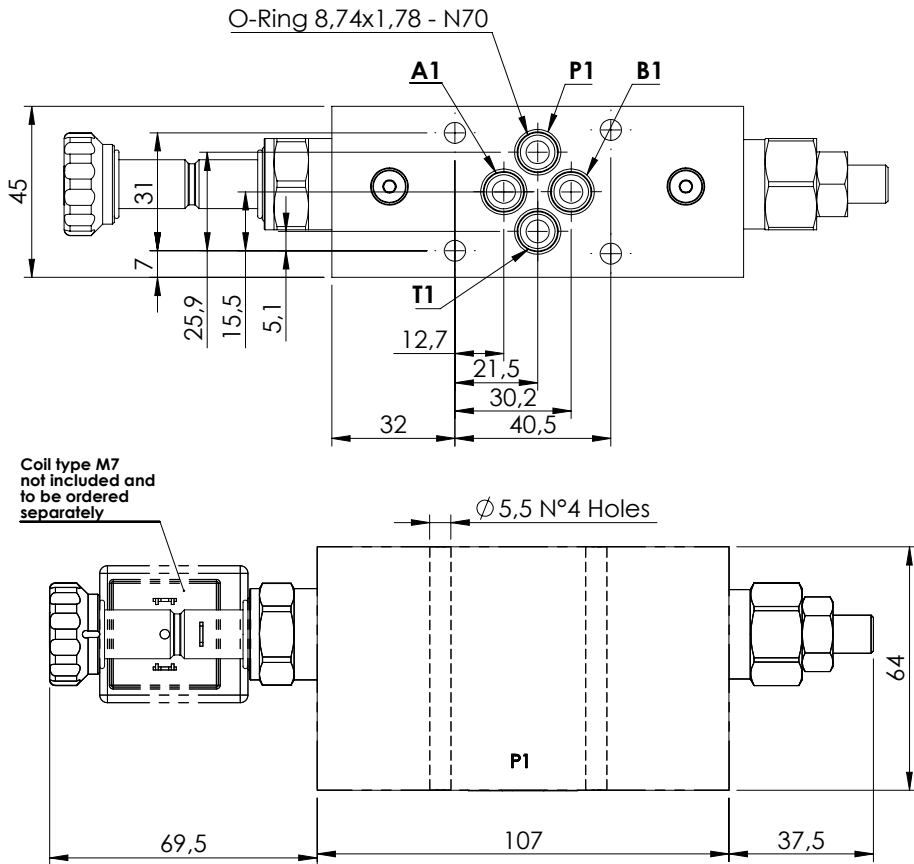
ORDERING CODES

| Quick code | Description | Main ports size | Version |
|------------|------------------------|------------------|---------|
| BD000034 | BNND-040-LE-N06-N210-R | A,B,P,T: CETOP 3 | Right |
| BD000119 | BNND-040-LE-N06-N210-L | A,B,P,T: CETOP 3 | Left |
| | | | |
| | | | |
| | | | |

MODULAR VALVE FOR CETOP

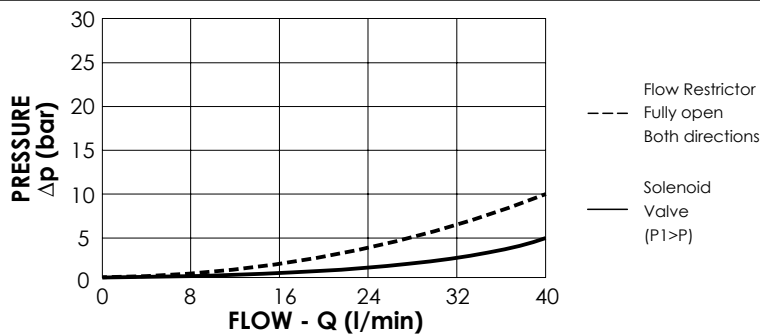
BNFN-040-NT

CETOP 3



SPECIFICATIONS

| | |
|--------------------------|-----------|
| Max. operating pressure: | 210 bar |
| Rated flow: | 40 l/min |
| Manifold: | Aluminium |
| Weight: | 1 kg |
| Coil type: | M7 |



NOTES

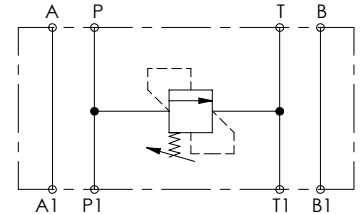
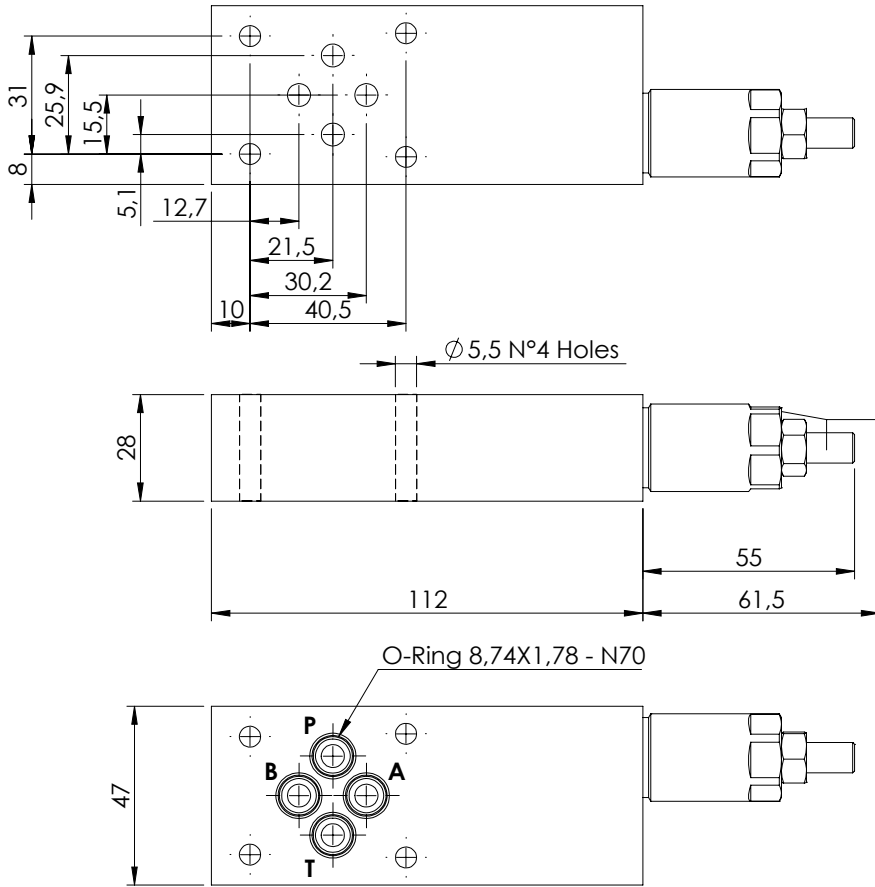
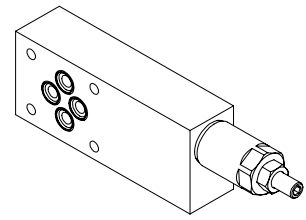
ORDERING CODES

| Quick code | Description | Main ports size | |
|------------|----------------------|------------------|--|
| BF000004 | BNFN-040-NT-N06-N210 | A,B,P,T: CETOP 3 | |
| | | | |
| | | | |
| | | | |
| | | | |

MODULAR VALVE FOR CETOP

KPLN-030-DPNA

CETOP 3

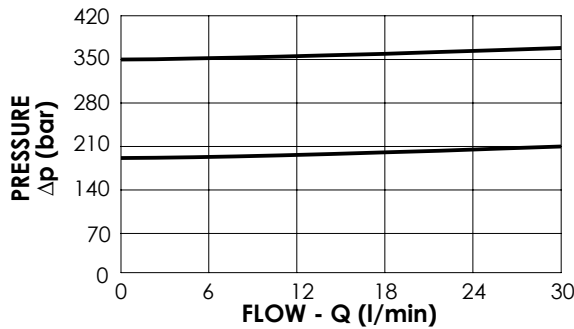
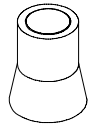


SPECIFICATIONS

| | |
|--------------------------|-----------|
| Max. operating pressure: | 210 bar |
| Rated flow: | 30 l/min |
| Manifold: | Aluminium |
| Weight: | 0,52 kg |

SEALING CAP

Ordering code:
AT000020



NOTES

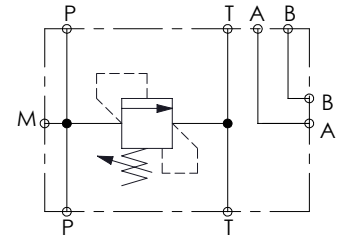
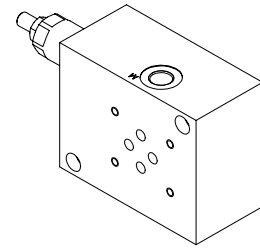
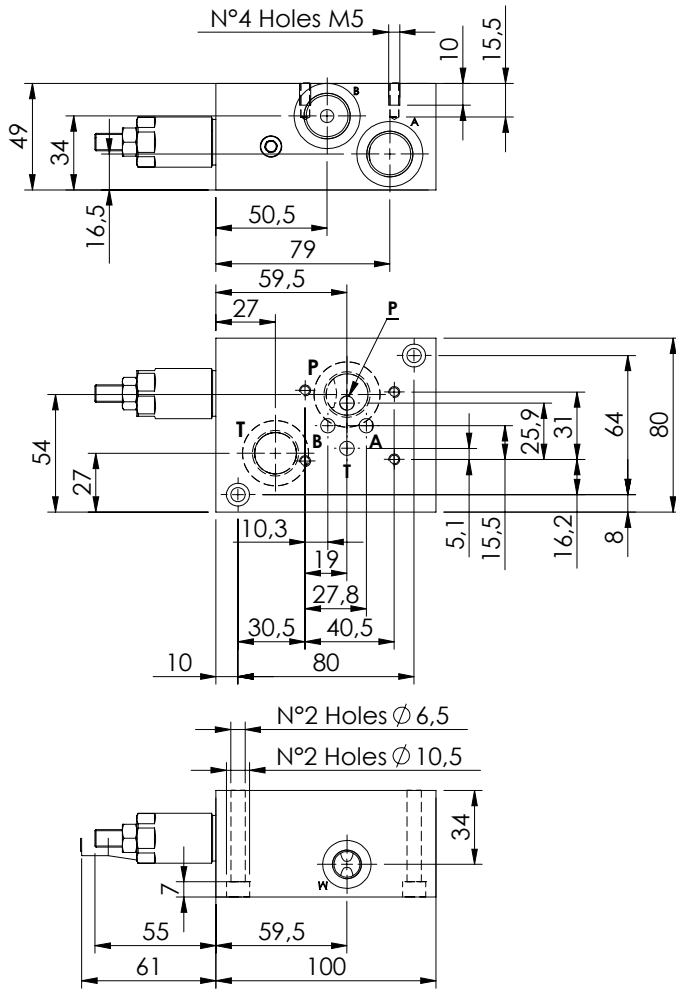
ORDERING CODES

| Quick code | Description | Main ports size | Standard setting (bar, Q=5 l/min) | Adjustm. range (bar) | Pressure increase (bar/turn) |
|------------|---------------------------|------------------|-----------------------------------|----------------------|------------------------------|
| KP000170 | KPLN-030-DPNA-HN-N06-N350 | A,B,P,T: CETOP 3 | 350 | 100-350 | 91 |
| KP000112 | KPLN-030-DPNA-HN-N06-N200 | A,B,P,T: CETOP 3 | 200 | 50-210 | 42 |
| | | | | | |
| | | | | | |
| | | | | | |
| | | | | | |

MODULAR VALVE FOR CETOP

KPLN-030-DPNA

**CETOP 3
SUBPLATE**

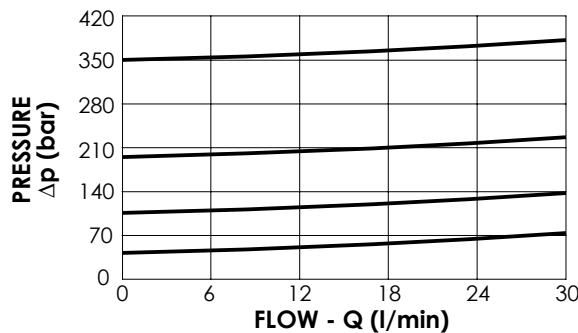
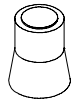


SPECIFICATIONS

| | |
|--------------------------|------------------|
| Max. operating pressure: | 350 bar |
| Rated flow: | 30 l/min |
| Manifold: | Aluminium |
| Weight: | 1,04 kg |

SEALING CAP

Ordering code:
AT000020



NOTES

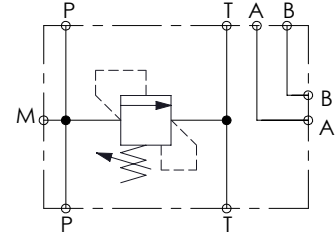
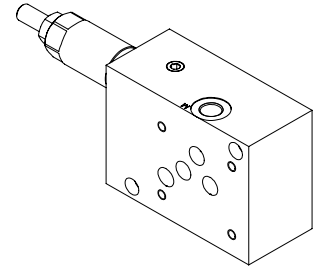
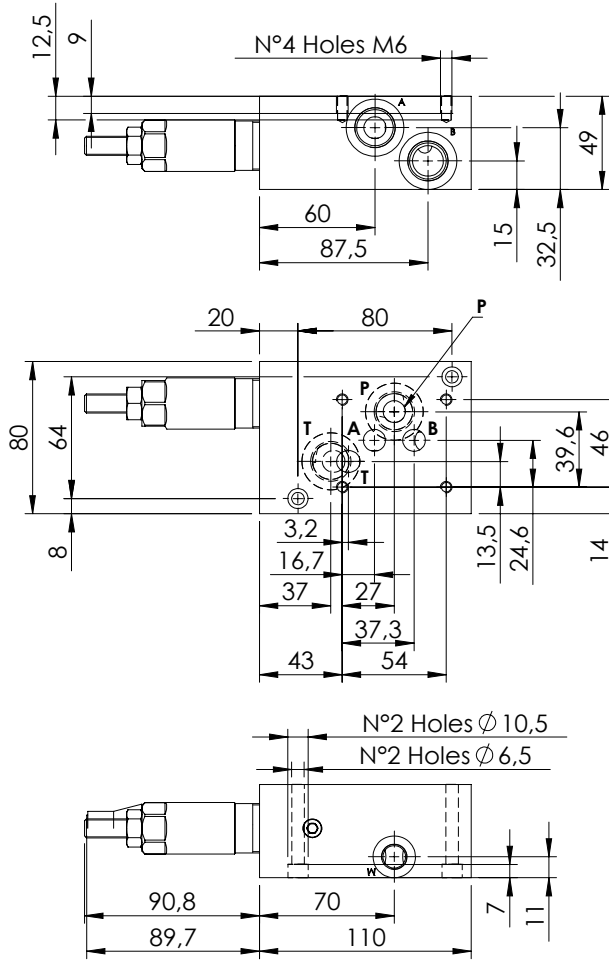
ORDERING CODES

| Quick code | Description | Main ports size | Standard setting (bar, Q=5 l/min) | Adjustm. range (bar) | Pressure increase (bar/turn) |
|------------|---------------------------|--|-----------------------------------|----------------------|------------------------------|
| KP000071 | KPLN-030-DPNA-HN-N06-N350 | A,B,P,T: CETOP 3 A,B,P,T: G 1/2" ; M: G1/4" | 350 | 100-350 | 91 |
| KP000072 | KPLN-030-DPNA-HN-N06-N200 | A,B,P,T: CETOP 3 A,B,P,T: G 1/2" ; M: G1/4" | 200 | 50-210 | 42 |
| KP000073 | KPLN-030-DPNA-HN-N06-N100 | A,B,P,T: CETOP 3 A,B,P,T: G 1/2" ; M: G1/4" | 100 | 30-100 | 20 |
| KP000074 | KPLN-030-DPNA-HN-N06-N050 | A,B,P,T: CETOP 3 A,B,P,T: G 1/2" ; M: G1/4" | 50 | 5-50 | 10 |
| | | | | | |
| | | | | | |

MODULAR VALVE FOR CETOP

KPLN-080-DPNA

**CETOP 5
SUBPLATE**

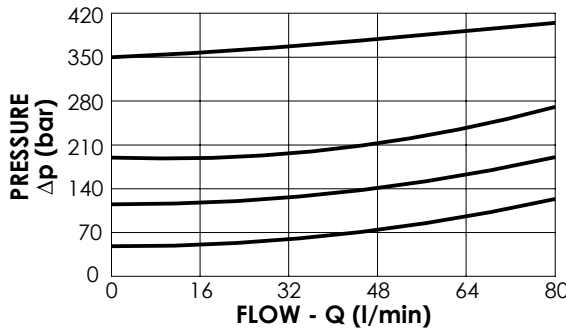
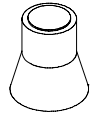


SPECIFICATIONS

| | |
|--------------------------|-----------|
| Max. operating pressure: | 350 bar |
| Rated flow: | 80 l/min |
| Manifold: | Aluminium |
| Weight: | 1,26 kg |

SEALING CAP

Ordering code:
AT000021



NOTES

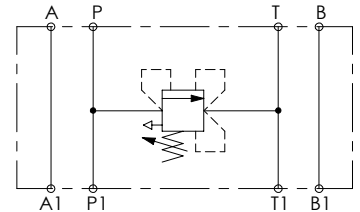
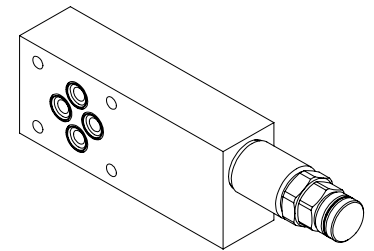
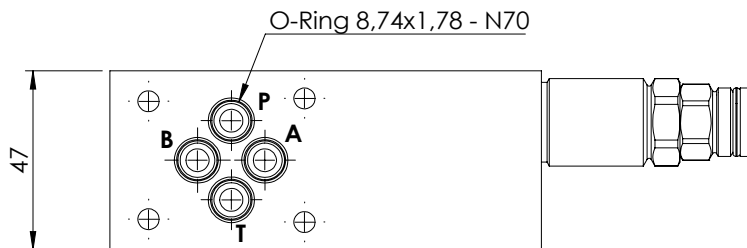
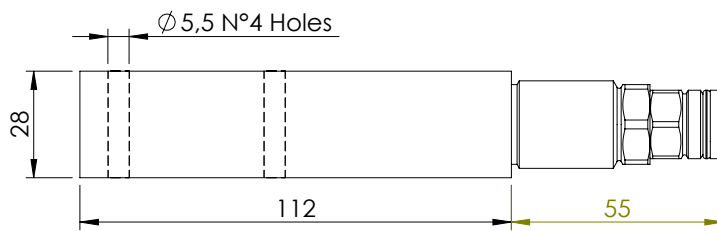
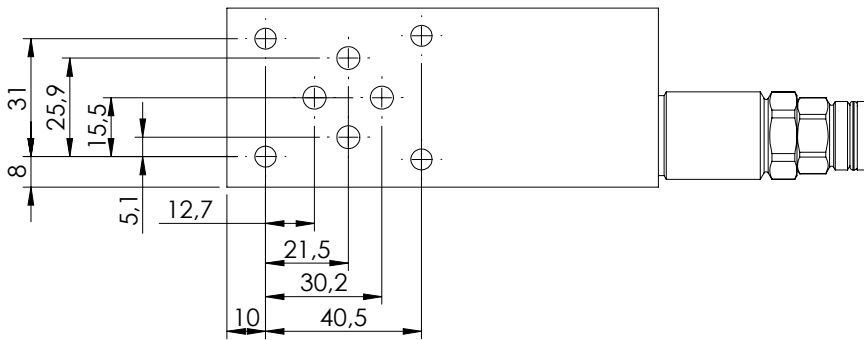
ORDERING CODES

| Quick code | Description | Main ports size | Standard setting (bar, Q=5 l/min) | Adjustm. range (bar) | Pressure increase (bar/turn) |
|------------|---------------------------|---|-----------------------------------|----------------------|------------------------------|
| KP000075 | KPLN-080-DPNA-HN-N10-N350 | A,B,P,T: CETOP 5 A,B,P,T: G 1/2" ;M: G1/4" | 350 | 100-350 | 42 |
| KP000076 | KPLN-080-DPNA-HN-N10-N200 | A,B,P,T: CETOP 5 A,B,P,T: G 1/2" ;M: G1/4" | 200 | 60-210 | 24 |
| KP000077 | KPLN-080-DPNA-HN-N10-N100 | A,B,P,T: CETOP 5 A,B,P,T: G 1/2" ;M: G1/4" | 100 | 25-100 | 13 |
| KP000102 | KPLN-080-DPNA-HN-N10-N050 | A,B,P,T: CETOP 5 A,B,P,T: G 1/2" ;M: G1/4" | 50 | 5-50 | 9 |
| | | | | | |
| | | | | | |

MODULAR VALVE FOR CETOP

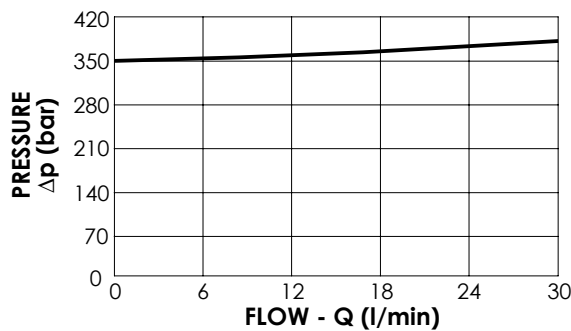
KPLT-030-DPNA

CETOP 3



SPECIFICATIONS

| | |
|--------------------------|-----------|
| Max. operating pressure: | 210 bar |
| Rated flow: | 30 l/min |
| Manifold: | Aluminium |
| Weight: | 0,54 kg |



NOTES

ORDERING CODES

| Quick code | Description | Main ports size | Standard setting (bar, Q=5 l/min) | Adjustm. range (bar) | Pressure increase (bar/turn) |
|------------|---------------------------|------------------|-----------------------------------|----------------------|------------------------------|
| KP000171 | KPLT-030-DPNA-HN-N06-N350 | A,B,P,T: CETOP 3 | 350 | 100-350 | 91 |
| | | | | | |
| | | | | | |
| | | | | | |
| | | | | | |

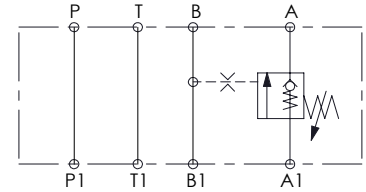
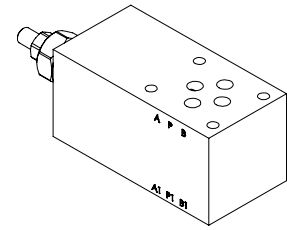
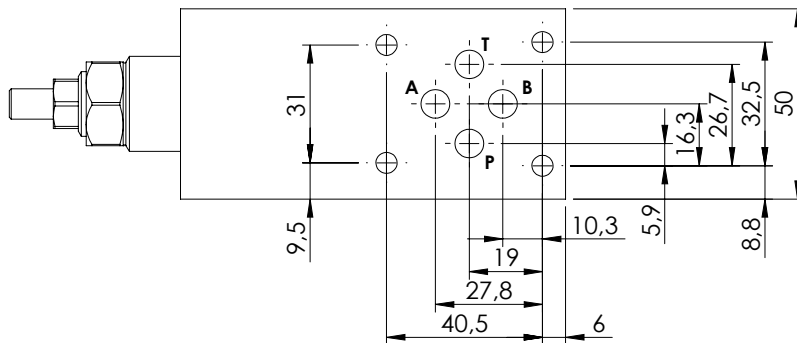
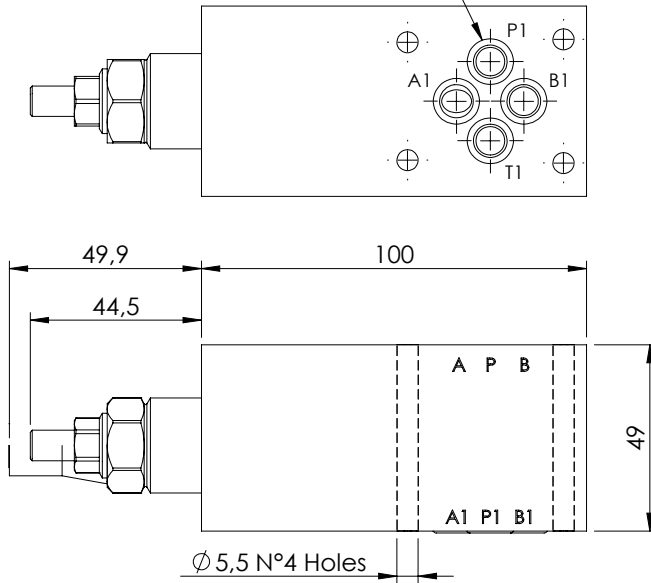
MODULAR VALVE FOR CETOP

MBSN-060-ZTNP

**SINGLE ACTING
CETOP 3**



O-Ring 8,74x1,78 - N90

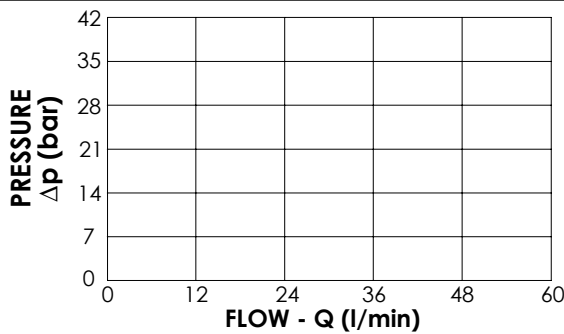
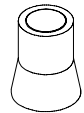


SPECIFICATIONS

| | |
|--------------------------|------------------|
| Max. operating pressure: | 250 bar |
| Rated flow: | 60 l/min |
| Manifold: | Aluminium |
| Weight: | 724,9 g |

SEALING CAP

Ordering code:
AT000020



NOTES

Setting: at least 1.3 times the load induced pressure

ORDERING CODES

| Quick code | Description | Pilot ratio | Main ports size | Standard setting (bar, Q=5 l/min) | Adjust. range (bar) | Pressure increase (bar/turn) |
|------------|---------------------------|-------------|------------------|-----------------------------------|---------------------|------------------------------|
| MB000923 | MBSN-060-ZTNP-01-N06-N250 | 1:0 | A,B,P,T: CETOP 3 | 25 | 3-30 | 5 |
| | | | | | | |
| | | | | | | |
| | | | | | | |
| | | | | | | |
| | | | | | | |

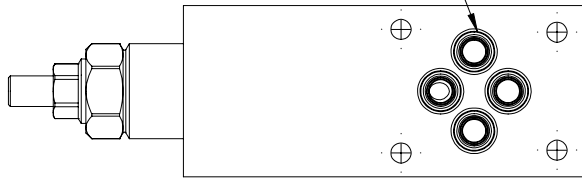
CETOP AND MODULAR VALVE

MBSN-060-ARNR

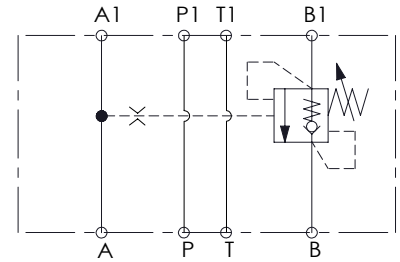
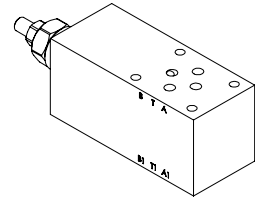
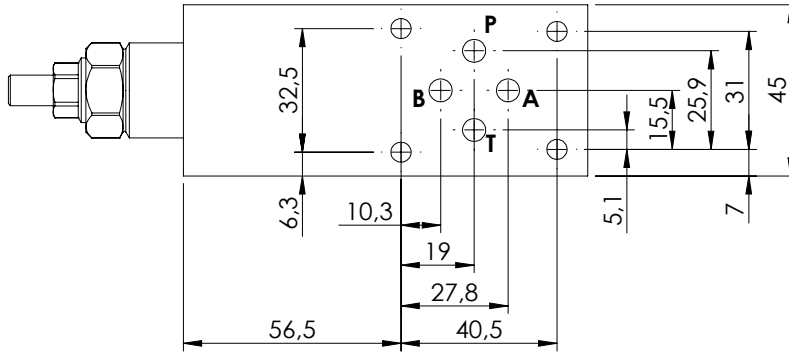
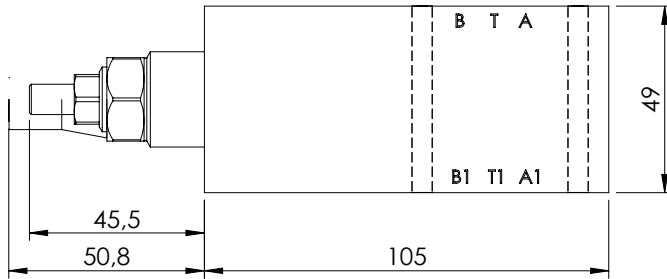
**SINGLE ACTING
CETOP 3**



O-Ring 8,74x1,78 - N70



Ø 5,3 N°4 Holes

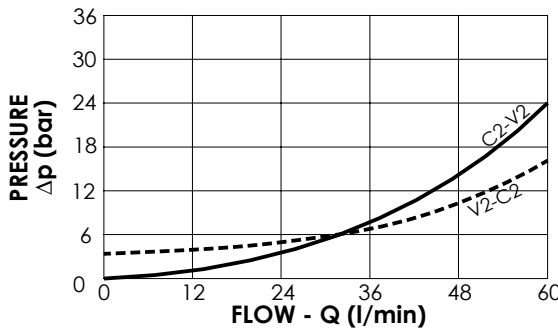
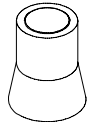


SPECIFICATIONS

| | |
|--------------------------|----------|
| Max. operating pressure: | 350 bar |
| Rated flow: | 60 l/min |
| Manifold: | Steel |
| Weight: | 1,78 kg |

SEALING CAP

Ordering code:
AT000020



NOTES

Setting: at least 1.3 times the load induced pressure

ORDERING CODES

| Quick code | Description | Pilot ratio | Main ports size | Standard setting (bar, Q=5 l/min) | Adjust. range (bar) | Pressure increase (bar/turn) |
|------------|---------------------------|-------------|------------------|-----------------------------------|---------------------|------------------------------|
| MB000886 | MBSN-060-ATNR-04-N06-N350 | 4,2:1 | A,B,P,T: CETOP 3 | 350 | 100-350 | 139 |
| | | | | | | |
| | | | | | | |
| | | | | | | |
| | | | | | | |

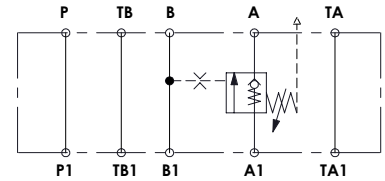
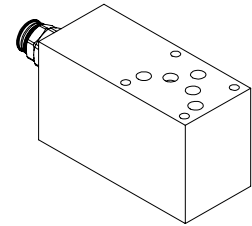
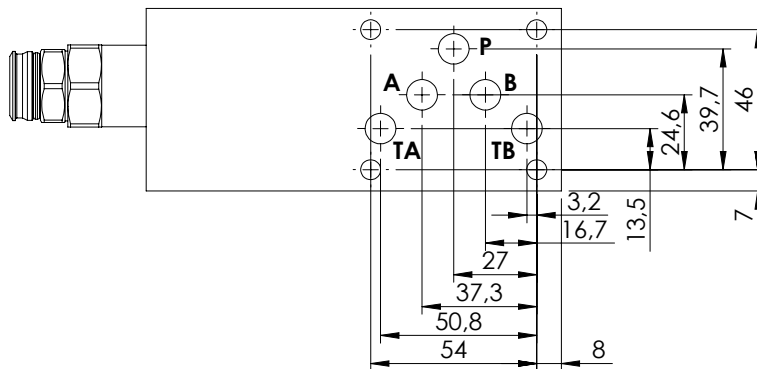
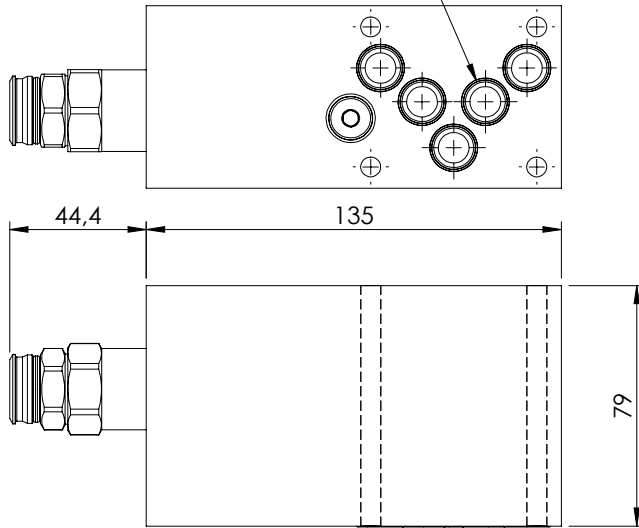
MODULAR VALVE FOR CETOP

MBST-100-ZTNP

SINGLE ACTING
CETOP 5

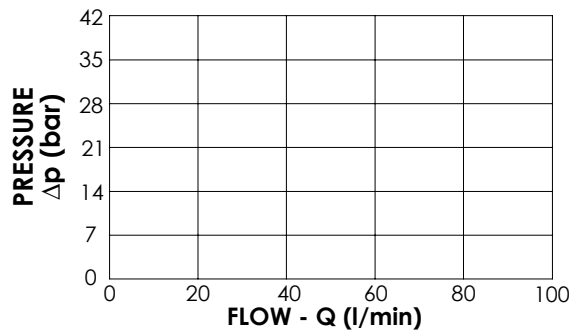


O-Ring 12,42x1,78 - N70



SPECIFICATIONS

| | |
|--------------------------|-----------|
| Max. operating pressure: | 250 bar |
| Rated flow: | 100 l/min |
| Manifold: | Aluminium |
| Weight: | 1734,8 g |



NOTES

Setting: at least 1.3 times the load induced pressure

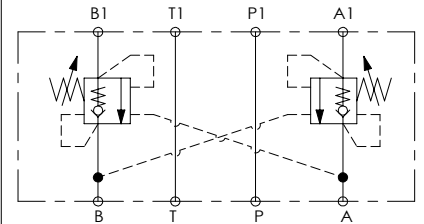
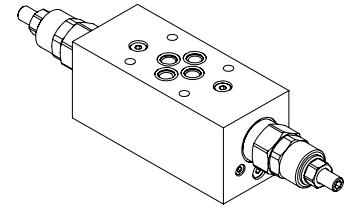
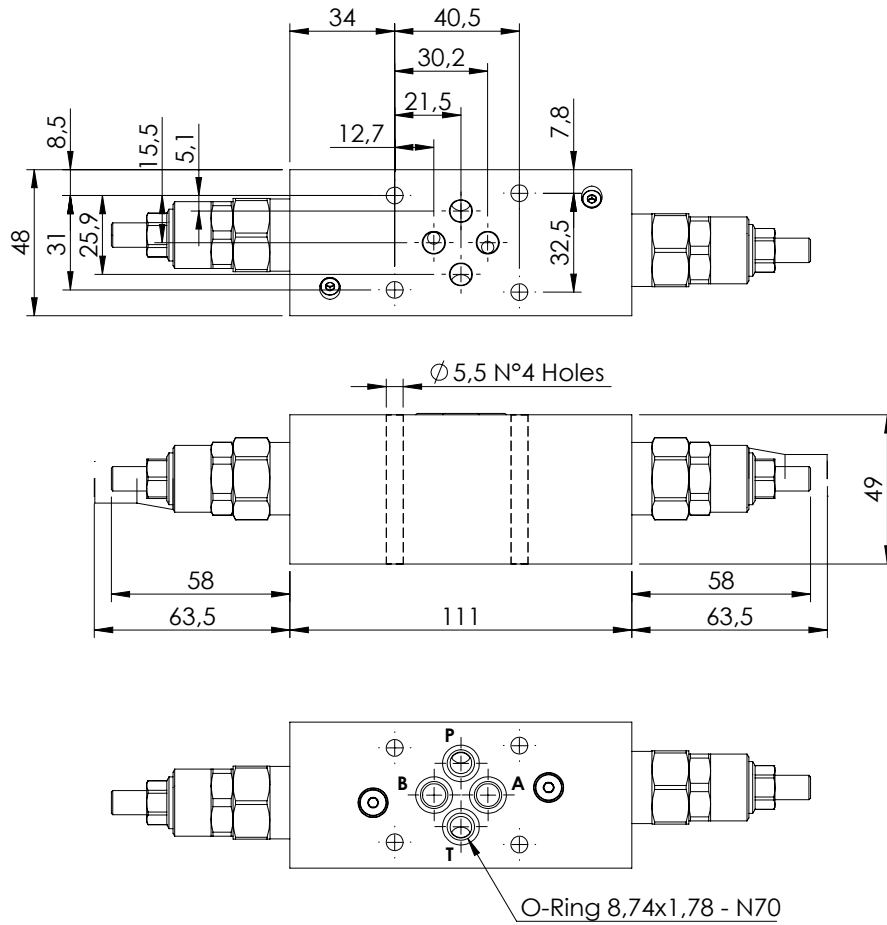
ORDERING CODES

| Quick code | Description | Pilot ratio | Main ports size | Standard setting (bar, Q=5 l/min) | Adjust. range (bar) | Pressure increase (bar/turn) |
|------------|---------------------------|-------------|------------------|-----------------------------------|---------------------|------------------------------|
| MB000924 | MBST-100-ZTNP-01-T10-N250 | 1:0 | A,B,P,T: CETOP 5 | 10 | 3-25 | 8 |
| | | | | | | |
| | | | | | | |
| | | | | | | |
| | | | | | | |

MODULAR VALVE FOR CETOP

MBDN-030-LTNR

**DOUBLE ACTING
CETOP 3**

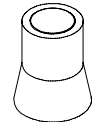


SPECIFICATIONS

| | |
|--------------------------|-----------|
| Max. operating pressure: | 210 bar |
| Rated flow: | 30 l/min |
| Manifold: | Aluminium |
| Weight: | 1 kg |

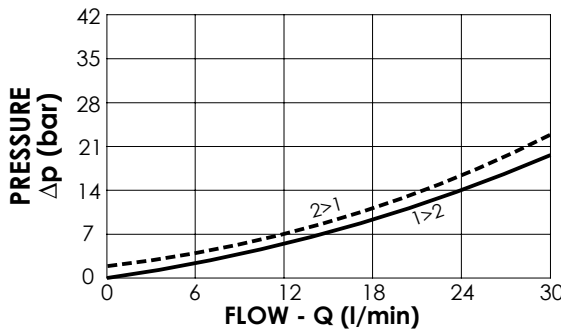
SEALING CAP

Ordering code:
AT000020



NOTES

Setting: at least 1.3 times the load induced pressure



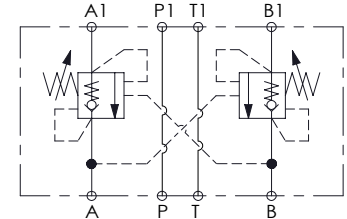
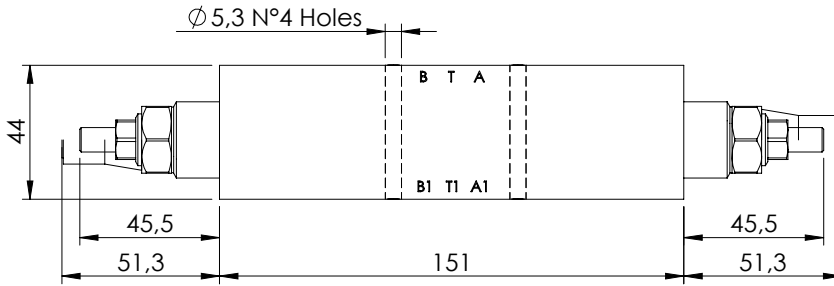
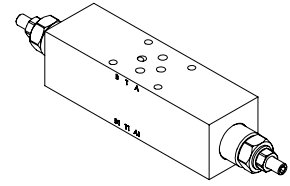
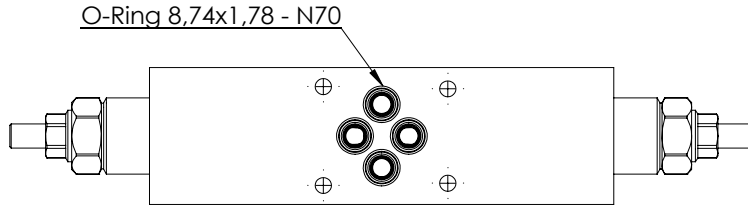
ORDERING CODES

| Quick code | Description | Pilot ratio | Main ports size | Standard setting (bar, Q=5 l/min) | Adjust. range (bar) | Pressure increase (bar/turn) |
|------------|---------------------------|-------------|------------------|-----------------------------------|---------------------|------------------------------|
| MB000917 | MBDN-030-LTNR-04-N06-N210 | 4:1 | A,B,P,T: CETOP 3 | 200 | 70-210 | 93,5 |
| | | | | | | |
| | | | | | | |
| | | | | | | |
| | | | | | | |

MODULAR VALVE FOR CETOP

MBDN-060-ZTNR

DOUBLE ACTING
CETOP 3

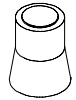


SPECIFICATIONS

| | |
|--------------------------|-----------|
| Max. operating pressure: | 350 bar |
| Rated flow: | 60 l/min |
| Manifold: | Aluminium |
| Weight: | 1,03 kg |

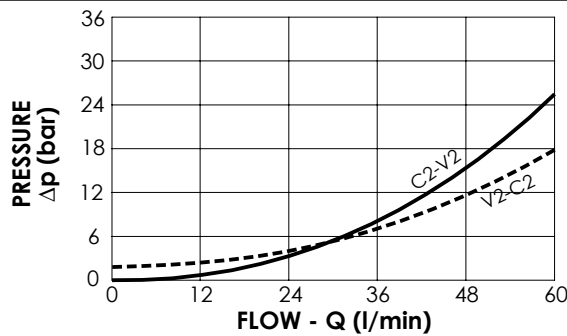
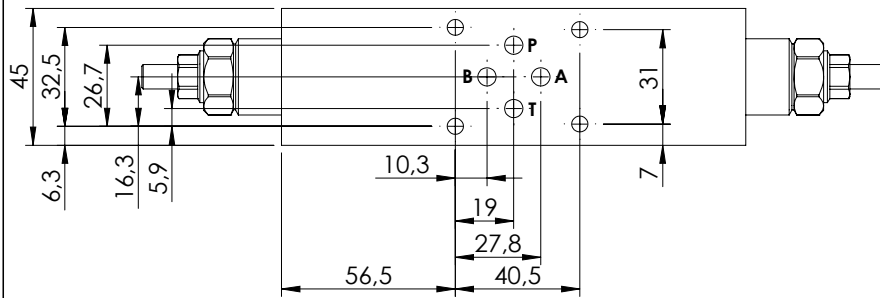
SEALING CAP

Ordering code:
AT000020



NOTES

Setting: at least 1.3 times the load induced pressure



ORDERING CODES

| Quick code | Description | Pilot ratio | Main ports size | Standard setting (bar, Q=5 l/min) | Adjust. range (bar) | Pressure increase (bar/turn) |
|------------|---------------------------|-------------|------------------|-----------------------------------|---------------------|------------------------------|
| MB000517 | MBDN-060-ZTNR-04-N06-N350 | 4,2:1 | A,B,P,T: CETOP 3 | 350 | 100-350 | 138 |
| MB000546 | MBDN-060-ZTNR-04-N06-N200 | 4,2:1 | A,B,P,T: CETOP 3 | 200 | 60-210 | 62 |
| | | | | | | |
| | | | | | | |
| | | | | | | |
| | | | | | | |

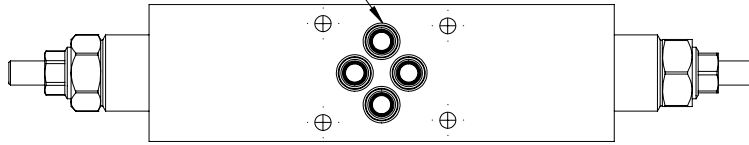
MODULAR VALVE FOR CETOP

MBDN-060-ATNR

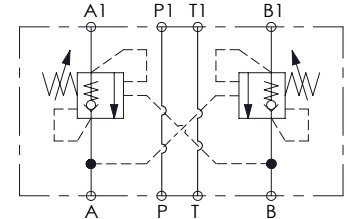
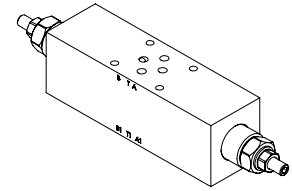
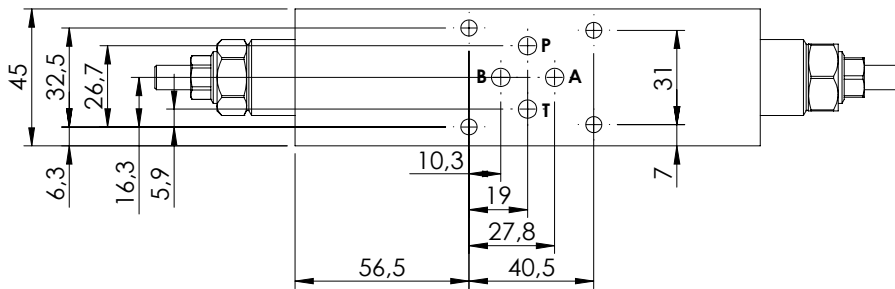
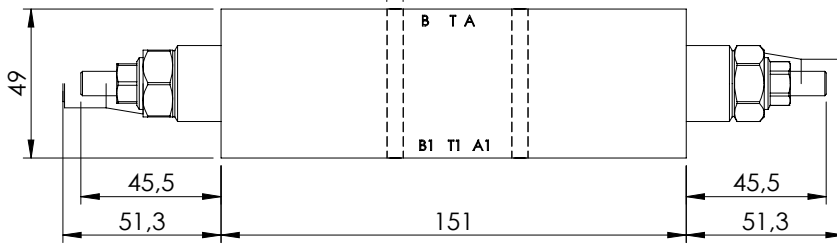
**DOUBLE ACTING
CETOP 3**



O-Ring 8,74x1,78 - N70



Ø 5,3 N°4 Holes

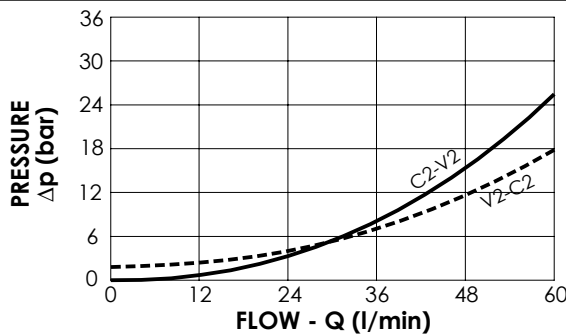
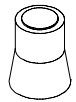


SPECIFICATIONS

| | |
|--------------------------|----------|
| Max. operating pressure: | 350 bar |
| Rated flow: | 60 l/min |
| Manifold: | Steel |
| Weight: | 2,61 kg |

SEALING CAP

Ordering code:
AT000020



NOTES

Setting: at least 1.3 times the load induced pressure

ORDERING CODES

| Quick code | Description | Pilot ratio | Main ports size | Standard setting (bar, Q=5 l/min) | Adjust. range (bar) | Pressure increase (bar/turn) |
|------------|---------------------------|-------------|------------------|-----------------------------------|---------------------|------------------------------|
| MB000929 | MBDN-060-ATNR-04-N06-N350 | 4,2:1 | A,B,P,T: CETOP 3 | 350 | 100-350 | 138 |
| MB000774 | MBDN-060-ATNR-04-N06-N200 | 4,2:1 | A,B,P,T: CETOP 3 | 200 | 50-210 | 62 |
| | | | | | | |
| | | | | | | |
| | | | | | | |
| | | | | | | |

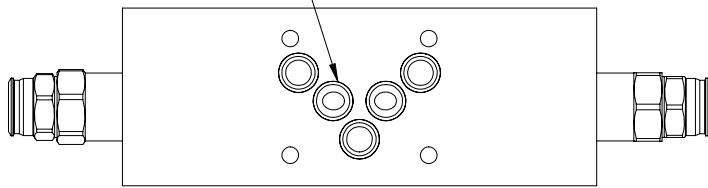
MODULAR VALVE FOR CETOP

MBDN-100-ZTNR

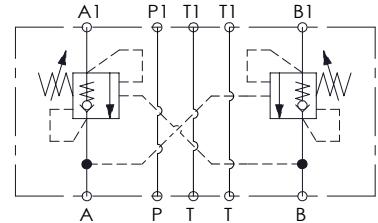
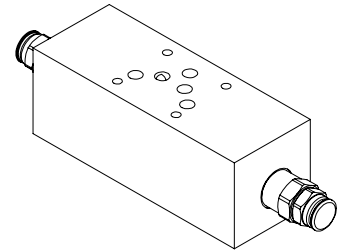
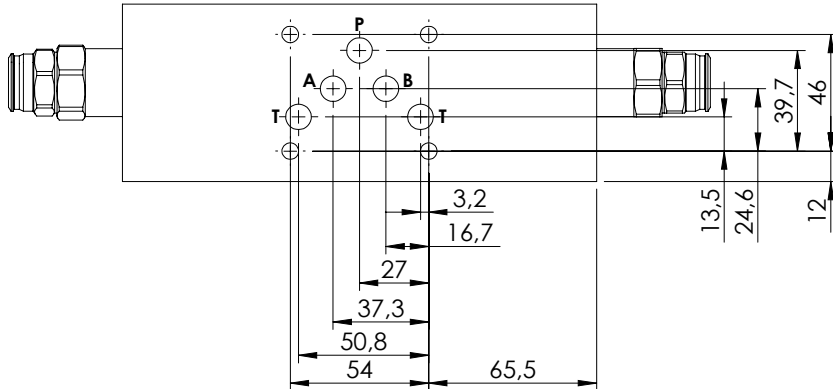
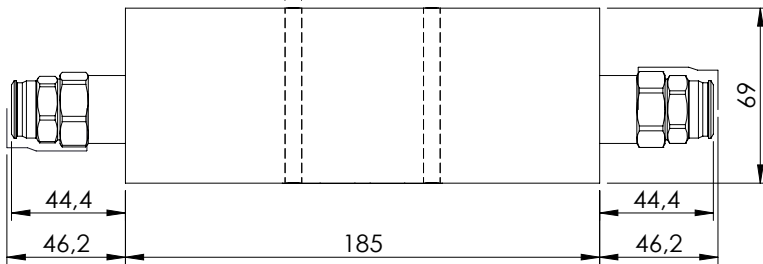
**DOUBLE ACTING
CETOP 5**



O-Ring 12,42x1,78 - N70



Ø 6,5 N°4 Holes

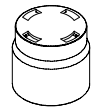


SPECIFICATIONS

| | |
|--------------------------|-----------|
| Max. operating pressure: | 350 bar |
| Rated flow: | 100 l/min |
| Manifold: | Aluminium |
| Weight: | 2,64 kg |

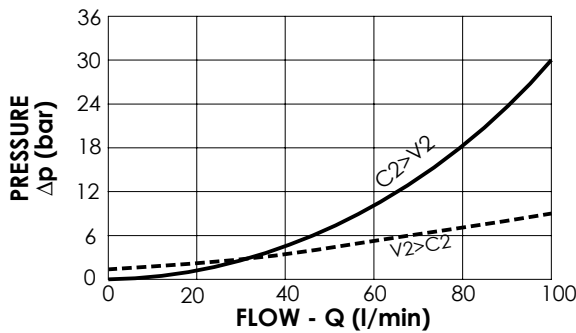
SEALING CAP

Ordering code:
PT000243



NOTES

Setting: at least 1.3 times the load induced pressure



ORDERING CODES

| Quick code | Description | Pilot ratio | Main ports size | Standard setting (bar, Q=5 l/min) | Adjust. range (bar) | Pressure increase (bar/turn) |
|------------|---------------------------|-------------|------------------|-----------------------------------|---------------------|------------------------------|
| MB000916 | MBDN-100-ZTNR-04-N10-N350 | 4:1 | A,B,P,T: CETOP 5 | 350 | 100-350 | 118 |
| | | | | | | |
| | | | | | | |
| | | | | | | |
| | | | | | | |

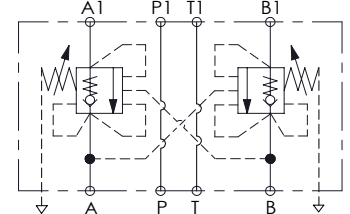
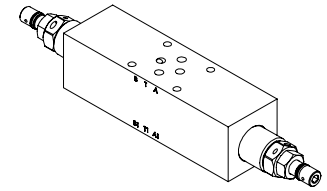
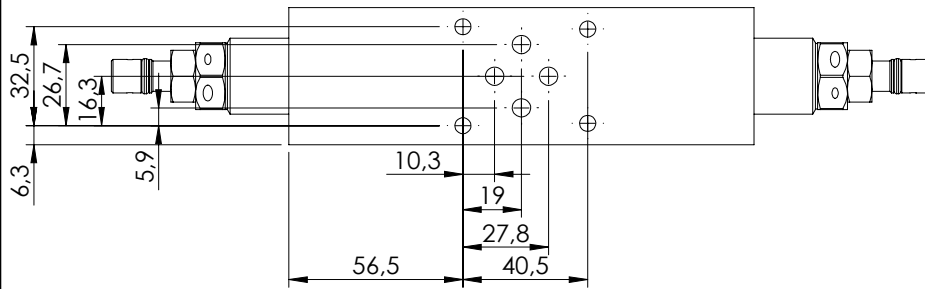
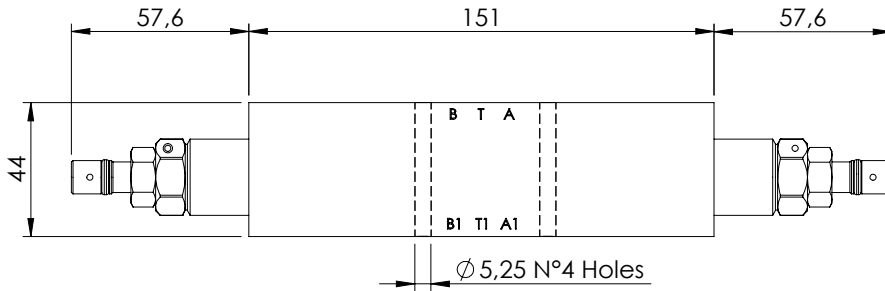
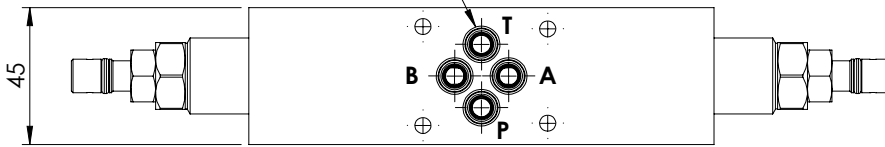
OVERCENTRE VALVE

MBDP-060-ZTNR

DOUBLE ACTING
CETOP 3

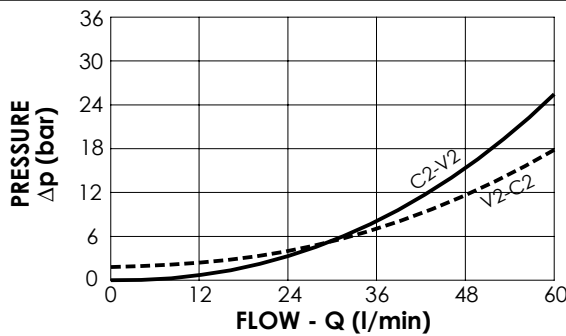


O-Ring 8,74x1,78 - N70



SPECIFICATIONS

| | |
|--------------------------|-----------|
| Max. operating pressure: | 350 bar |
| Rated flow: | 60 l/min |
| Manifold: | Aluminium |
| Weight: | 1,09 kg |



NOTES

Setting: at least 1.3 times the load induced pressure

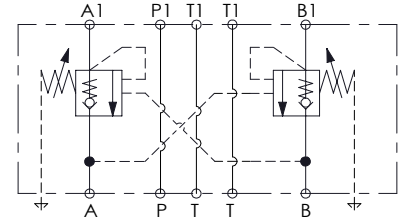
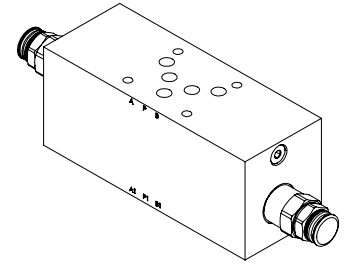
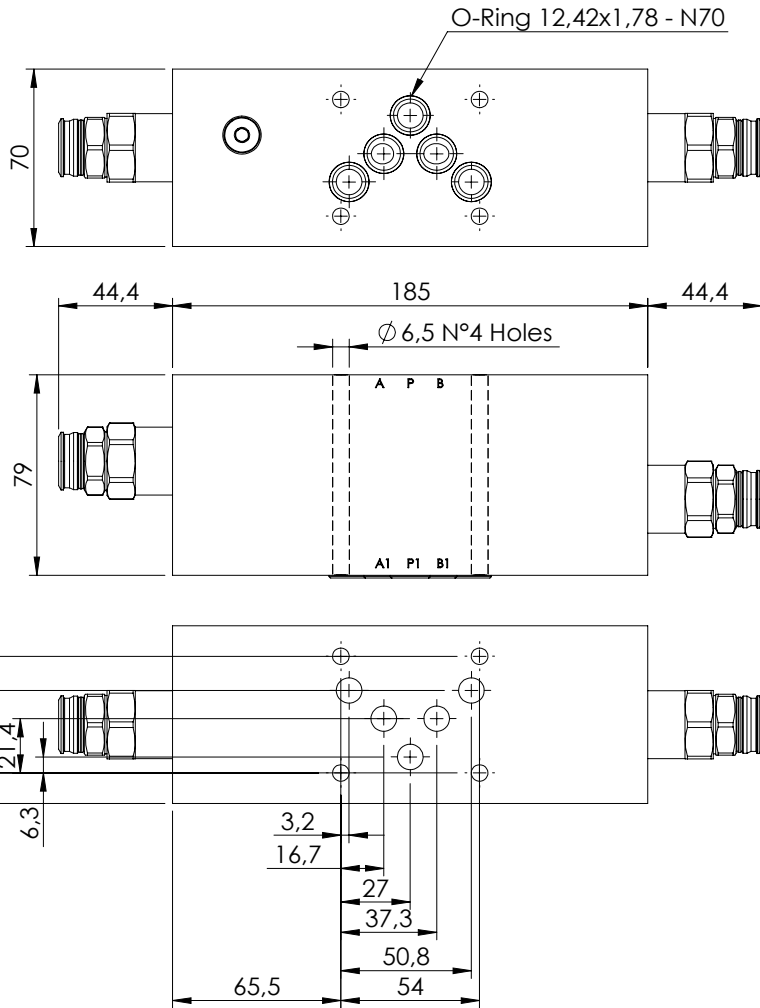
ORDERING CODES

| Quick code | Description | Pilot ratio | Main ports size | Standard setting (bar, Q=5 l/min) | Adjust. range (bar) | Pressure increase (bar/turn) |
|------------|---------------------------|-------------|------------------|-----------------------------------|---------------------|------------------------------|
| MB000454 | MBDP-060-ZTNR-04-N06-N350 | 4,2:1 | A,B,P,T: CETOP 3 | 350 | 100-350 | 166 |
| | | | | | | |
| | | | | | | |
| | | | | | | |
| | | | | | | |

MODULAR VALVE FOR CETOP

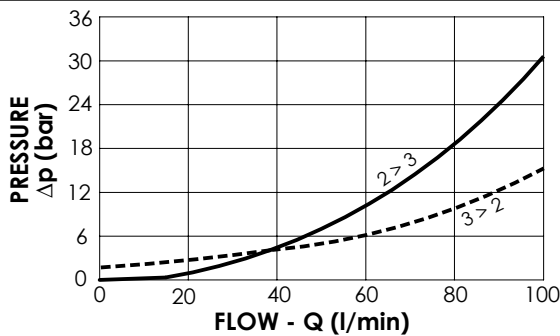
MBDT-100-ARNR

CETOP 5



SPECIFICATIONS

| | |
|--------------------------|------------------|
| Max. operating pressure: | 350 bar |
| Rated flow: | 100 l/min |
| Manifold: | Steel |
| Weight: | 7,7 kg |



NOTES

Setting: at least 1.3 times the load induced pressure

ORDERING CODES

| Quick code | Description | Pilot ratio | Main ports size | Standard setting (bar, Q=5 l/min) | Adjust. range (bar) | Pressure increase (bar/turn) |
|------------|---------------------------|-------------|------------------|-----------------------------------|---------------------|------------------------------|
| MB000930 | MBDT-100-ATNR-04-N10-N350 | 3,8:1 | A,B,P,T: CETOP 5 | 350 | 100-350 | 118 |
| | | | | | | |
| | | | | | | |
| | | | | | | |
| | | | | | | |