

BLADDER ACCUMULATOR BRACKETS

For quick & safe mounting of Bladder Accumulators

- Sized to suit the full range of shell diameters
- Steel assembly with rubber cushion ring included
- Available in Stainless or Carbon Steel
- New PN: 300-5711 added for vessels up to Ø245mm diameter

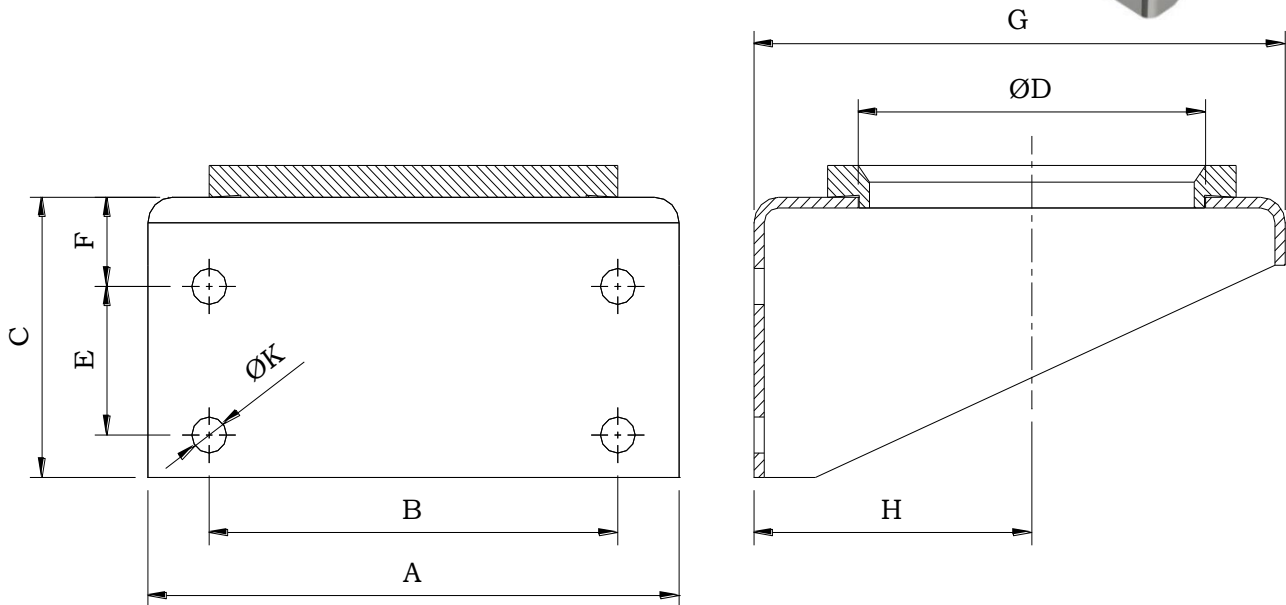
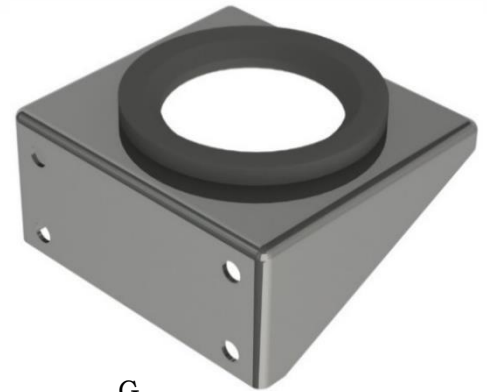


Table 1- Stock Bracket Dimensions

| Part Number | Vessel Size [Litre] | Material | A [mm] | B [mm] | C [mm] | D [mm] | E [mm] | F [mm] | G [mm] | H [mm] | K [mm] |
|-------------|---------------------|-----------------|--------|--------|--------|--------|--------|--------|--------|--------|--------|
| 300-5702 | 4 Litre | Carbon Steel | 200 | 140 | 90 | 120 | 40 | 30 | 175 | 93 | 11 |
| 300-5703 | 4 Litre | Stainless Steel | 200 | 140 | 90 | 120 | 40 | 30 | 175 | 93 | 11 |
| 300-5704 | 10-50 (Ø219mm Dia.) | Carbon Steel | 260 | 200 | 120 | 170 | 70 | 30 | 230 | 120 | 17 |
| 300-5705 | 10-50 (Ø219mm Dia.) | Stainless Steel | 260 | 200 | 120 | 170 | 70 | 30 | 230 | 120 | 17 |
| 300-5704/1 | 10-50 (Ø229mm Dia.) | Carbon Steel | 260 | 200 | 120 | 170 | 70 | 30 | 236 | 126 | 17 |
| 300-5705/1 | 10-50 (Ø229mm Dia.) | Stainless Steel | 260 | 200 | 120 | 170 | 70 | 30 | 236 | 126 | 17 |
| 300-5711 | 10-50 (Ø245mm Dia.) | Stainless Steel | 260 | 200 | 132 | 170 | 70 | 42 | 260 | 136 | 17 |

BESPOKE BRACKETS AVAILABLE UPON REQUEST

CONTACT QHP LTD FOR MORE INFORMATION:

T: +44 (0) 1244 393500 | E: info@qhp.co.uk | W: www.qhp.co.uk