

MORE LINES AND BASIC SYMBOLS



**Pneumatic energy source
(gas energy)**



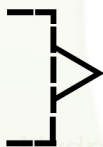
**Hydraulic energy source
(liquid energy)**



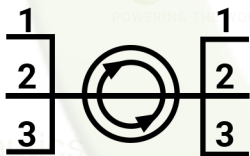
Permanent Magnet



**Port exhausting to
atmosphere**



Exhaust to atmosphere



**Three-way rotary connection
(3 way)**



Spring



Adjustable spring



Pre-set stroke limiter



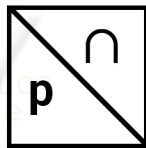
Adjustable stroke limiter



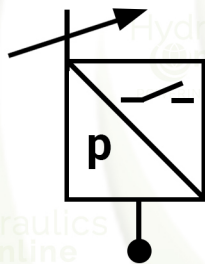
Lockable



Pressure Switch



**Pressure transducer
(analogue)**



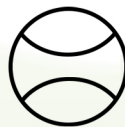
**Electronic pressure
switch**



**Pressure
guage**



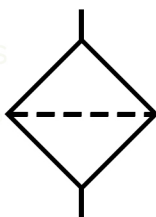
**Temperature
guage**



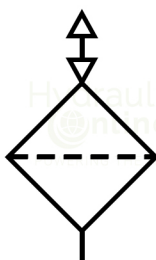
**Flow
meter**



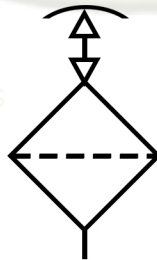
**Top: isolation valve
(open for normal circuit)
Bottom: isolation valve
(closed for normal circuit
operation)**



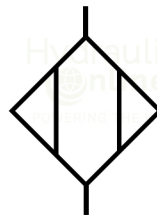
Filter



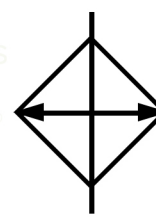
**Air
Breather**



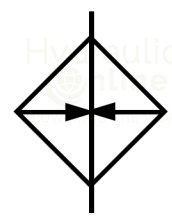
**Filler-
Breather**



Dryer



Cooler



Heater