

VALVE SYMBOLS



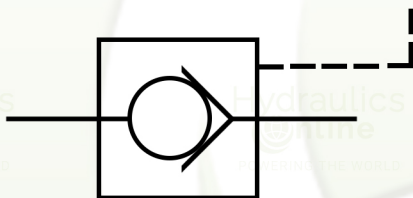
**Check Valve
(non-return valve)**



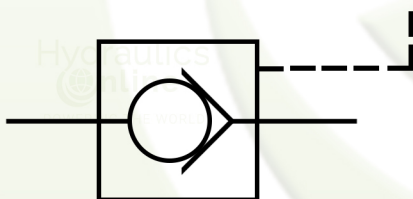
**Spring rating
important**



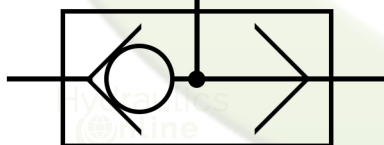
**Adjustable flow control
valve**



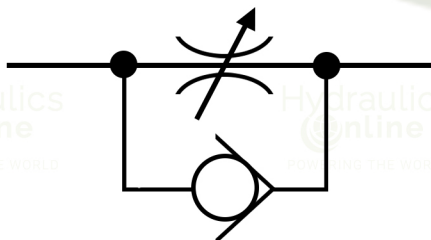
**Pilot-to-open check valve
(3 port)**



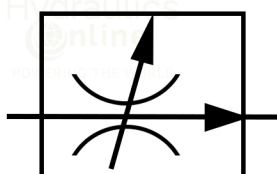
**Pilot-to-open check valve
(4 port or "vented")**



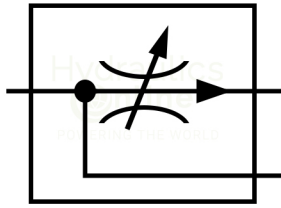
Shuttle Valve



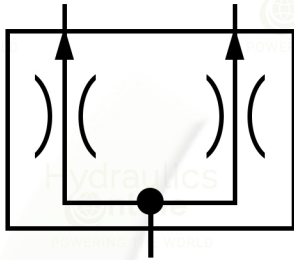
Throttle-check valve



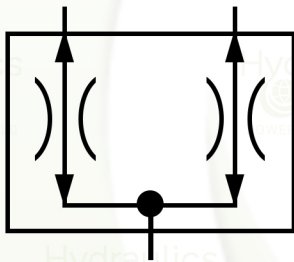
**Pressure compensated
flow control valve**



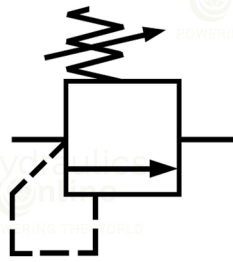
**Priority flow control
valve (priority flow
divider)**



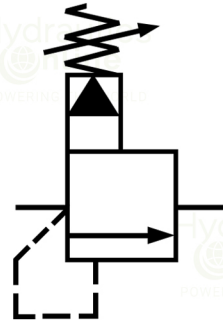
Flow divider (spool type)



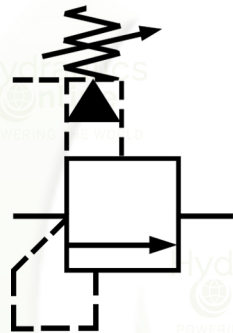
**Flow divider / combiner
(spool type)**



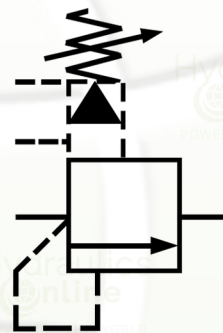
**Pressure relief
valve: direct
operated
internal drain...**



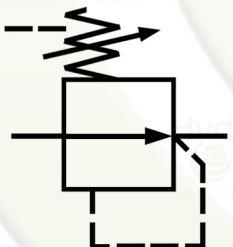
**... now
showing:
pilot operated**



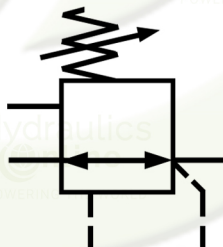
**... now
showing
external drain**



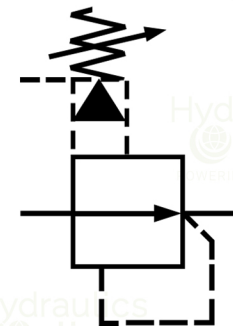
**... now showing:
external control
(unload or "vent")**



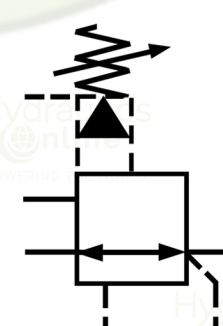
**Pressure
reducing valve:
direct operated...**



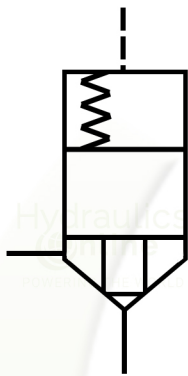
**...now showing:
3-way function**



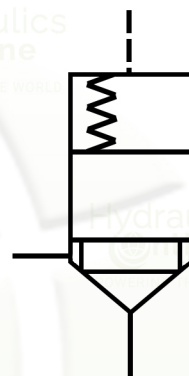
**Pressure
reducing valve:
pilot operated...**



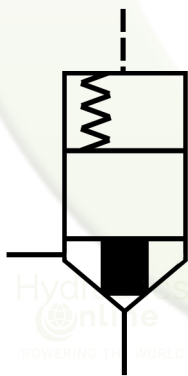
**... now showing:
3-way function**



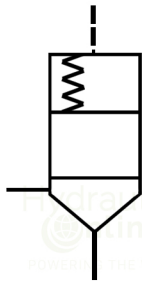
**Directional control
valve cartridge:
Small seat area...**



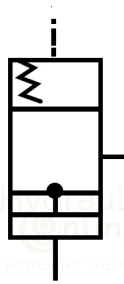
**...now showing:
large seat area**



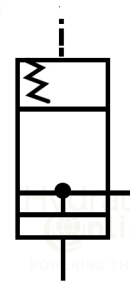
Now showing: the poppet having a throttling effect (Damping nose)



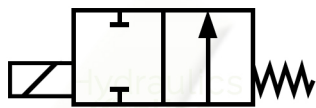
Pressure control valve cartridge: poppet type, normally closed...



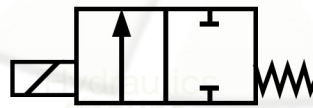
...now showing: spool type



...now showing: normally open



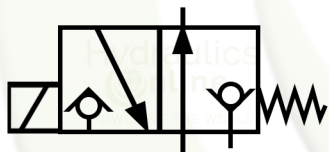
Directional control valve: direct operated, 2 port & 2 positions, solenoid operated, spring return, normally open



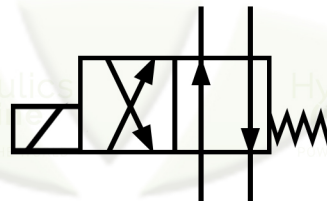
...now showing: normally closed and permissable bi-directional flow



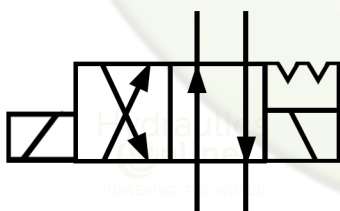
...now showing: 3/2 configuration



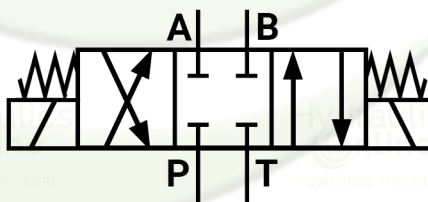
...now showing: leak free closures (poppet valve)



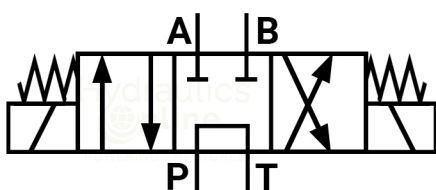
... now showing: 4/2 configuration



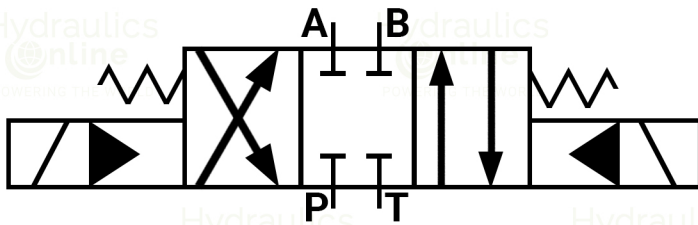
...now showing: detents ("stay-put" operation)



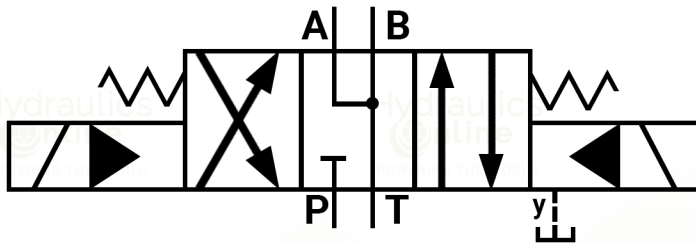
4/3 direct operated directional control valve: solenoid operated, spring centered, all ports closed in neutral...



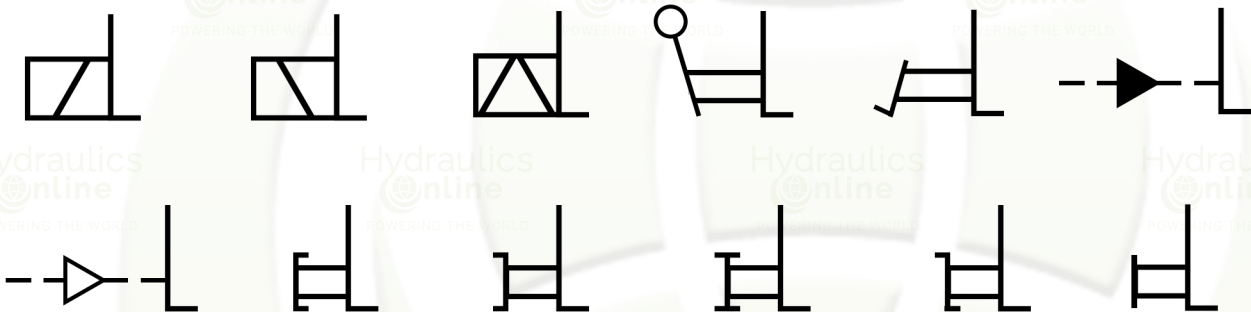
...now showing: P-T in neutral



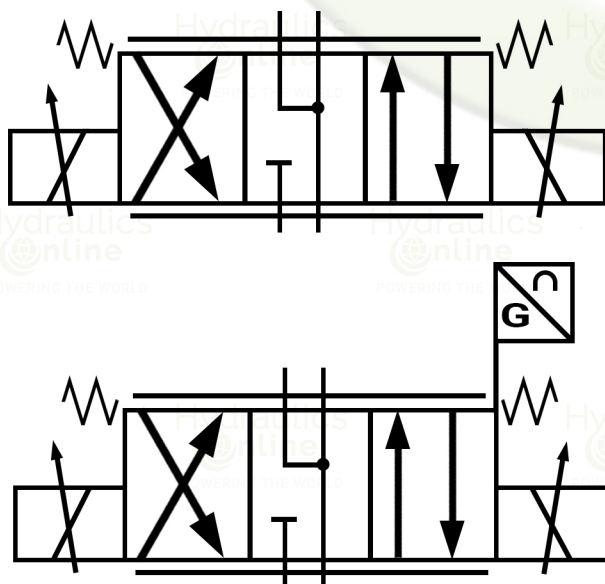
4/3 Pilot operated directional control valve: solenoid operated, spring centered internal pilot, internal drain, all ports closed in neutral...



... now showing: external pilot, external drain, A-B-T in neutral

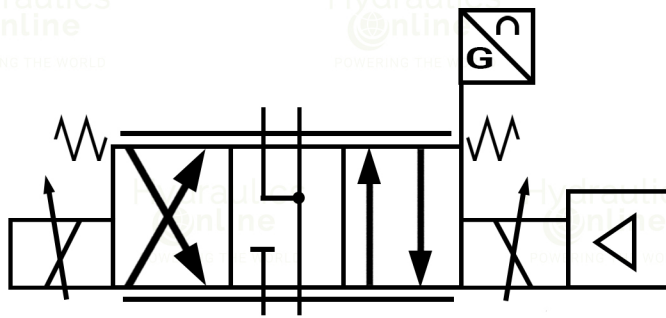


Alternative valve actuators: (1) pushing solenoid, (2) pulling solenoid, (3) dual solenoid, (4) lever, (5) pedal, (6) direct hydraulic operation, (7) direct pneumatic operation, (8) push, (9) pull, (10) push-pull, (11) turn, (12) manual override

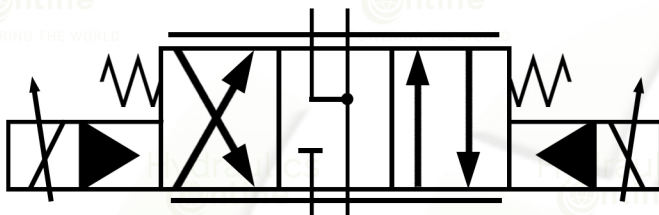


Proportional directional control valve: direct operated, force controlled (non-feedback)...

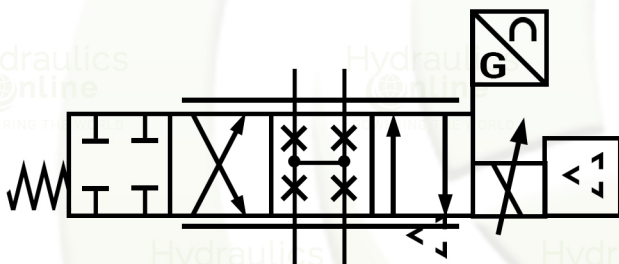
...now showing: stroke controlled (with feedback)



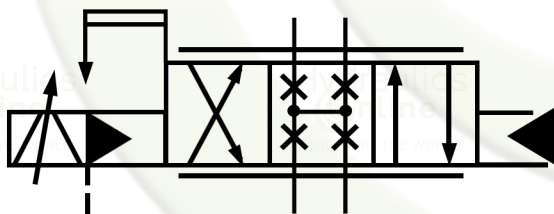
... now showing: integral amplifier (on board electronics)



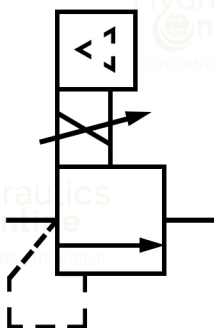
Proportional directional control valve: pilot operated, force controlled (non-feedback) internal pilot, internal drain



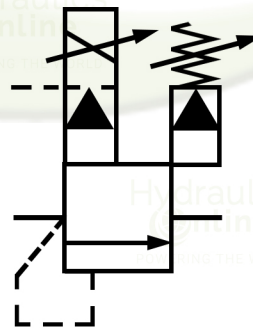
Servo valve: direct operated, electrical feedback, safety shut down position, integral amplifier



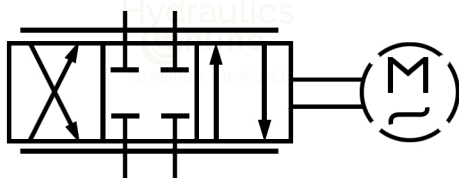
Servo valve: pilot operated (2 stage), mechanical feed-back, external pilot, internal drain



proportional pressure relief valve: direct operated, integral amplifier



proportional pressure relief valve: pilot operated, maximum pressure limitation, external drain



Proportional directional control valve: stepper motor actuated. All ports closed in neutral