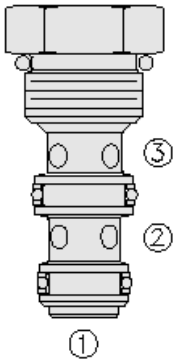




## Overview



### Description

A load shuttle, screw-in, cartridge style, hydraulic check valve, for use in blocking circuits where a priority of flow/direction is given to a higher pressure circuit over a lower one.

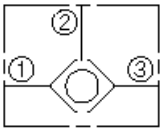
### Operation

The LS08-30 will allow flow from the higher pressure port 1 or 3 to port 2.

### Features

- Rapid response to load direction changes.
- Compact size.

### Symbol



## Ratings

### Pressure Ratings

Pressure rating 241 bar (3500 psi)

### Flow Ratings

Flow rating See performance graph  
Maximum internal leakage 0.25 ml/min (5 drops/min) - **Note:** At 207 bar (3000 psi)

### Temperature Ratings

Operating fluid temperature	-40 to 100 °C (-40 to 212 °F)	- <b>Note:</b> With buna N seals
	-26 to 204 °C (-15 to 400 °F)	- <b>Note:</b> With fluorocarbon seals
	-54 to 107 °C (-65 to 225 °F)	- <b>Note:</b> With polyurethane seals
	-54 to 107 °C (-65 to 225 °F)	- <b>Note:</b> With urethane seals
Storage temperature	-40 to 70 °C (-40 to 160 °F)	
Ambient temperature	-40 to 90 °C (-40 to 194 °F)	

### Other Ratings

Corrosion protection 960 hr salt spray per ASTM b117 (gls08-30)

## Operating Parameters

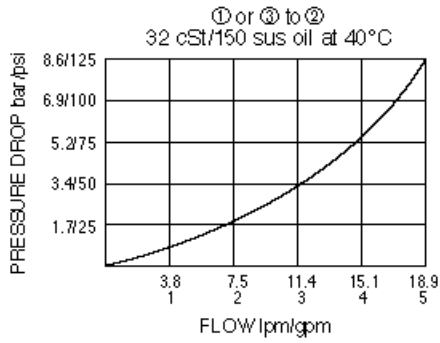
Fluids	Mineral based or synthetic hydraulic fluid with lubricating properties
Fluid viscosity range	7.4 to 420 cSt
Maximum operating contamination level	20/18/14 per ISO 4406

## Properties

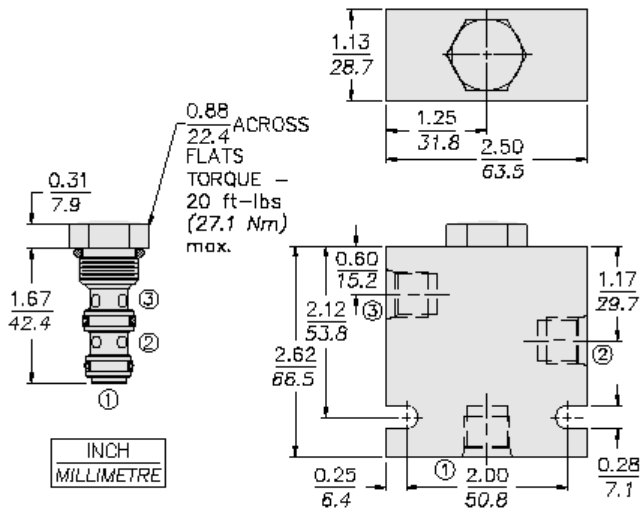
Unit weight	0.06 kg (0.14 lb)
Internal wetted surface area	70 cm <sup>2</sup> (10.8 in <sup>2</sup> )



## Performance



## Dimensions



ORIFICE DISC MAY NOT BE USED WITH THIS PRODUCT.

## Installation Specifications

Cavity	VC08-3
Cartridge installation torque	25.8 to 28.5 N-m (19 to 21 ft-lb)
Maximum allowable torque	54.2 N-m (40 ft-lb)
Orientation restriction	None

## Accessories

Seal kit	SK08-3N-MM	- <b>Note:</b> Buna N
	SK08-3V-MM	- <b>Note:</b> Fluorocarbon
	SK08-3P-MM	- <b>Note:</b> Polyurethane
	SK08-3U-OO	- <b>Note:</b> Urethane



## Order Code

<b>LS08-30-</b>		<b>-</b>	
<b>Porting</b>		<b>Seals</b>	
Cartridge Only	<b>0</b>	<b>N</b>	Buna-N (Std.)
SAE 4	<b>4T</b>	<b>V</b>	Fluorocarbon
SAE 6	<b>6T</b>		
1/4 in. BSP*	<b>2B</b>		
3/8 in. BSP*	<b>3B</b>		

\*BSP Body  
U.K. Mfr. Only

### Model Options

#### LS08-30-H-J

#### H Line Body

CODE	DESCRIPTION
0	No Body
4T	Aluminum SAE 4
6T	Aluminum SAE 6
6TD	Ductile Iron SAE 6
8TD	Ductile Iron SAE 8
3B	Aluminum BSPP 3/8" (3)
3BD	Ductile Iron BSPP 3/8" (3)

#### J Seal

CODE	DESCRIPTION
N	Buna-N
V	Fluorocarbon
P	Polyurethane
U	PPDI Urethane