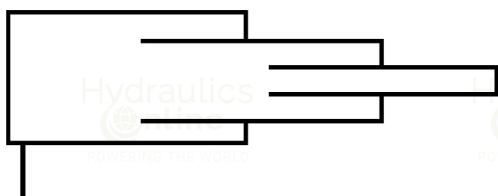
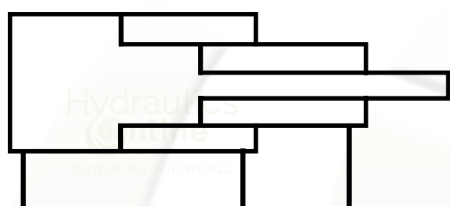


CYLINDER SYMBOLS



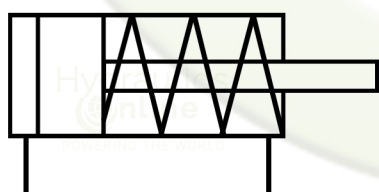
**Telescopic cylinder,
single-acting**



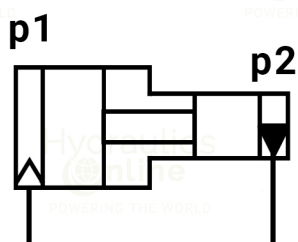
**Telescopic cylinder,
double-acting**



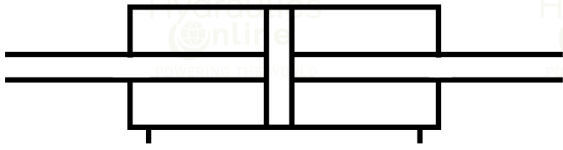
**Single-acting cylinder -
plunger cylinder**



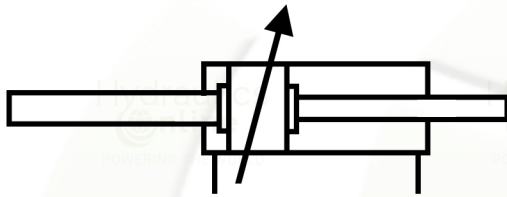
**Single-acting cylinder
with single-ended piston
rod, spring compartment
with leakage oil connection**



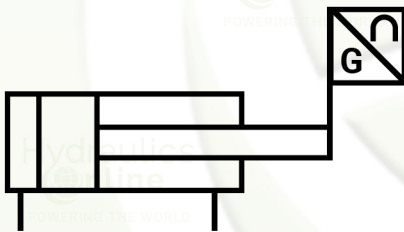
**Pressure booster single-
acting, which converts a
pneumatic pressure (p1)
into a higher hydraulic
pressure (p2)**



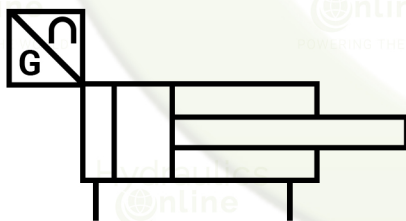
**Double-acting cylinder,
double rod**



**Double-acting cylinder,
with double-ended piston
rod, with adjustable
cushioning at each end
of stroke**



**Double-acting cylinder
with displacement encoder
on piston rod**



**Double-acting cylinder
with internal stroke
transducer**



**Double-acting cylinder
with single-ended piston
rod**